

LEA Name : Palmerton Area SD  
Address : 680 Fourth Street  
Palmerton , PA 18071

County : Carbon  
AUN Number : 121136503  
LEA Type : SD

## Annual Financial Report Accuracy Certification Statement

For Fiscal Year Ending

**6/30/2018**

Pennsylvania Department of Education

&

Office of Comptroller Operations

PDE-2056: Intermediate Unit

PDE-2057: School District, AVTS/CTC, Charter School,  
and Special Program Jointure

**CERTIFICATION: By signing this page I agree that the electronic data submitted is a complete and accurate statement of the financial operations and status of the local education agency for the fiscal year. It has been prepared in accordance with generally accepted accounting principles and established Commonwealth of PA reporting guidelines.**

\_\_\_\_\_  
Chief School Administrator Signature

\_\_\_\_\_  
Date

\_\_\_\_\_  
Board Secretary Signature

\_\_\_\_\_  
Date

Ryan P Kish

\_\_\_\_\_  
Contact Person

rkish@palmerton.org

\_\_\_\_\_  
Contact Person E-mail Address

(610)826-7101      Ext :

\_\_\_\_\_  
Contact Person Telephone Number

\_\_\_\_\_  
Contact Person Fax Number

**Audit Certification**  
**Annual Financial Report:**  
For Fiscal Year Ending **6/30/2018**  
**(Pursuant to PA School Code Section 218(b))**

LEA Name : Palmerton Area SD  
AUN Number : 121136503  
County : Carbon

<b>Audit Certification Due:</b> 12/31/2018
---

This certification is applicable to the Annual Financial Report data submitted through the Consolidated Financial Reporting System on: \_\_\_\_\_  
Date

**Auditing Firm:**

**Auditor Contact Name:**

**Auditor Phone:**

**Auditor E-mail:**

, , -

CERTIFICATION: By signing this page I agree that the financial statements of the school have been properly audited as noted above pursuant to Article XXIV, and in the auditor's professional opinion, the Annual Financial Report (PDE-2057) submitted on the date referenced is materially consistent with the audited financial statements.

**Chief School Administrator**

**Board Secretary**

\_\_\_\_\_  
Signature

\_\_\_\_\_  
Date

\_\_\_\_\_  
Signature

\_\_\_\_\_  
Date

Ryan P Kish

\_\_\_\_\_  
Contact Person

rkish@palmerton.org

\_\_\_\_\_  
Contact Person E-mail Address

(610)826-7101

Ext :

\_\_\_\_\_  
Contact Person Telephone Number

\_\_\_\_\_  
Contact Person Fax Number

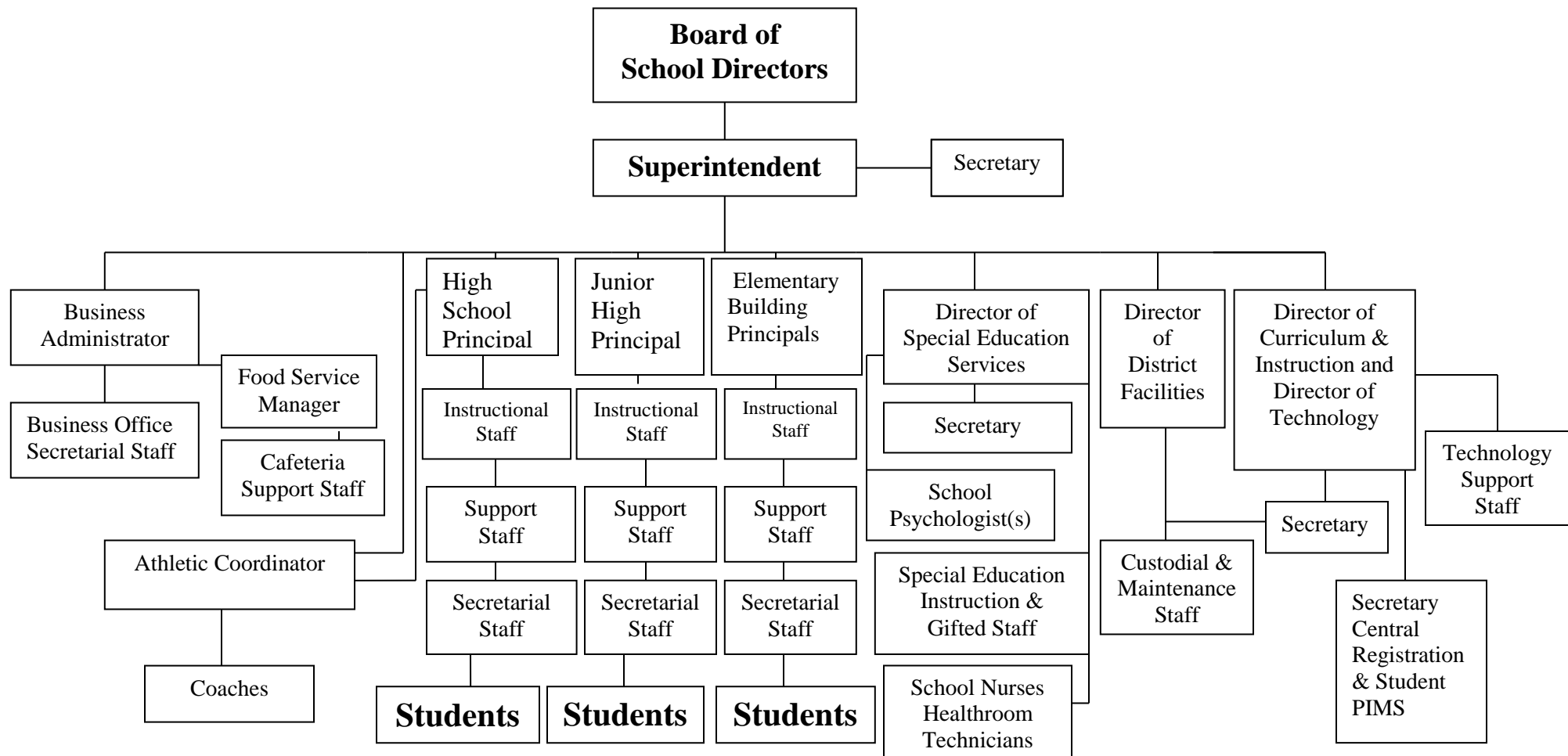
SECTION: LOCAL BOARD PROCEDURES

TITLE: ORGANIZATION CHART

ADOPTED: November 11, 2003

REVISED: February 16, 2016

# PALMERTON AREA SCHOOL DISTRICT



<u>Val Number</u>	<u>Description</u>	<u>Justification</u>
30390	Revenue Detail: AFR amount must equal PDE FAI System amount.  7110, AFR Rev Detail: \$6,572,284.71 7110, PDE FAI System: \$6,572,071.65	Basic Education adjustment received 08/2018 that was booked as a receivable. The adjustments pertained to the 13-14, 14-15, 15-16 fiscal years.

LEA : 121136503     Palmerton Area SD

Printed 10/26/2018 3:30:41 PM

Amounts Expressed in Whole Dollars		<u>General Fund</u> <u>(10)</u>	<u>Public Purpose Trust</u> <u>(27)</u>	<u>Other Compt Approved</u> <u>(28)</u>	<u>Athletic / Activity</u> <u>(29)</u>	<u>Capital Reserve (690.</u> <u>1850)</u> <u>(31)</u>
<b>Assets And Deferred Outflows Of Resources</b>						
<b>Assets</b>						
0100	Cash and Cash Equivalents	13,366,245				
0110	Investments					
0120	Taxes Receivable	1,442,774				
0130	Due From Other Funds					
0141	Due From Other Governments	260,816				
0142	State Revenue Receivable	1,109,262				
0143	Federal Revenue Receivable	47,897				
0145	Other Intergovernmental Revenue Receivable					
0146	Due from Primary Government					
0147	Due from Component Unit					
0150	Other Receivables	2,773				
0170	Inventories	68,002				
0180	Prepaid Expenses (Expenditures)					
0190	Other Current Assets					
<b>Total Assets</b>		<b>\$16,297,769</b>				
0910	Deferred Outflows of Resources					
<b>Total Assets And Deferred Outflows Of Resources</b>		<b>\$16,297,769</b>				

LEA : 121136503     Palmerton Area SD

Printed 10/26/2018 3:30:41 PM

Amounts Expressed in Whole Dollars	<u>Capital Reserve (1431)</u> <u>(32)</u>	<u>Other Capital Projects</u> <u>Fund</u> <u>(39)</u>	<u>Debt Service</u> <u>(40)</u>	<u>Permanent</u> <u>(90)</u>	<u>Total Governmental</u> <u>Funds</u>
<b>Assets And Deferred Outflows Of Resources</b>					
<b>Assets</b>					
0100 Cash and Cash Equivalents	5,669,825	1,082,169			20,118,239
0110 Investments					
0120 Taxes Receivable					1,442,774
0130 Due From Other Funds					
0141 Due From Other Governments					260,816
0142 State Revenue Receivable					1,109,262
0143 Federal Revenue Receivable					47,897
0145 Other Intergovernmental Revenue Receivable					
0146 Due from Primary Government					
0147 Due from Component Unit					
0150 Other Receivables					2,773
0170 Inventories					68,002
0180 Prepaid Expenses (Expenditures)					
0190 Other Current Assets					
<b>Total Assets</b>	<b>\$5,669,825</b>	<b>\$1,082,169</b>			<b>\$23,049,763</b>
0910 Deferred Outflows of Resources					
<b>Total Assets And Deferred Outflows Of Resources</b>	<b>\$5,669,825</b>	<b>\$1,082,169</b>			<b>\$23,049,763</b>

LEA : 121136503     Palmerton Area SD

Printed 10/26/2018 3:30:41 PM

Amounts Expressed in Whole Dollars		<u>General Fund</u> <u>(10)</u>	<u>Public Purpose Trust</u> <u>(27)</u>	<u>Other Compt Approved</u> <u>(28)</u>	<u>Athletic / Activity</u> <u>(29)</u>	<u>Capital Reserve (690.</u> <u>1850)</u> <u>(31)</u>
<b>Liabilities And Deferred Inflows Of Resources And Fund Balances</b>						
<b>Liabilities</b>						
0400	Due to Other Funds	18,134				
0411	Due to Other Governments	50,702				
0412	Due to Primary Government					
0413	Due to Component Unit					
0420	Accounts Payable	356,729				
0430	Contracts Payable					
0440	Current Portion of Long-Term Debt	62,943				
0450	Short-Term Payables					
0461	Accrued Salaries and Benefits	1,506,723				
0462	Payroll Deductions and Withholding	1,153,602				
0480	Unearned Revenues	1,167,117				
0490	Other Current Liabilities	744				
<b>Total Liabilities</b>		<b>\$4,316,694</b>				
0950	Deferred Inflows of Resources					
<b>Fund Balances</b>						
0810	Nonspendable Fund Balance	68,002				
0820	Restricted Fund Balance	80,000				
0830	Committed Fund Balance	3,276,779				
0840	Assigned Fund Balance	8,556,294				
0850	Unassigned Fund Balance					
<b>Total Fund Balances</b>		<b>\$11,981,075</b>				
<b>Total Liabilities, Deferred Inflows Of Resources And Fund Balances</b>		<b>\$16,297,769</b>				

LEA : 121136503      Palmerton Area SD

Printed 10/26/2018 3:30:41 PM

Amounts Expressed in Whole Dollars		<u>Capital Reserve (1431)</u> <u>(32)</u>	<u>Other Capital Projects</u> <u>Fund</u> <u>(39)</u>	<u>Debt Service</u> <u>(40)</u>	<u>Permanent</u> <u>(90)</u>	<u>Total Governmental</u> <u>Funds</u>
<b>Liabilities And Deferred Inflows Of Resources And Fund Balances</b>						
<b>Liabilities</b>						
0400	Due to Other Funds					18,134
0411	Due to Other Governments					50,702
0412	Due to Primary Government					
0413	Due to Component Unit					
0420	Accounts Payable		717,551			1,074,280
0430	Contracts Payable					
0440	Current Portion of Long-Term Debt					62,943
0450	Short-Term Payables					
0461	Accrued Salaries and Benefits					1,506,723
0462	Payroll Deductions and Withholding					1,153,602
0480	Unearned Revenues					1,167,117
0490	Other Current Liabilities					744
<b>Total Liabilities</b>			<b>\$717,551</b>			<b>\$5,034,245</b>
0950	Deferred Inflows of Resources					
<b>Fund Balances</b>						
0810	Nonspendable Fund Balance					68,002
0820	Restricted Fund Balance	5,669,825	364,618			6,114,443
0830	Committed Fund Balance					3,276,779
0840	Assigned Fund Balance					8,556,294
0850	Unassigned Fund Balance					
<b>Total Fund Balances</b>		<b>\$5,669,825</b>	<b>\$364,618</b>			<b>\$18,015,518</b>
<b>Total Liabilities, Deferred Inflows Of Resources And Fund Balances</b>		<b>\$5,669,825</b>	<b>\$1,082,169</b>			<b>\$23,049,763</b>

Amounts Expressed in Whole Dollars	<u>General Fund</u> <u>(10)</u>	<u>Public Purpose Trust</u> <u>(27)</u>	<u>Other Compt Approved</u> <u>(28)</u>	<u>Athletic / Activity</u> <u>(29)</u>	<u>Capital Reserve (690.</u> <u>1850)</u> <u>(31)</u>
<b>Revenues</b>					
6000 Revenue from Local Sources	19,135,790				
7000 Revenue from State Sources	12,345,632				
8000 Revenue from Federal Sources	417,002				
<b>Total Revenues</b>	<b>\$31,898,424</b>				
<b>Expenditures</b>					
1000 Instruction	19,113,129				
2000 Support Services	7,432,253				
3000 Operation of Non-Instructional Services	941,713				
4000 Facilities Acquisition, Construction and Improvement Services					
5110 Debt Service	2,155,220				
5130 Refund of Prior Year Revenues / Receipts					
<b>Total Expenditures</b>	<b>\$29,642,315</b>				
<b>Excess (Deficiency) Of Revenues Over Expenditures</b>	<b>\$2,256,109</b>				
<b>Other Financing Sources (Uses)</b>					
9110 Face Value of Bonds Issued					
9120 Proceeds from Refunding of Bonds					
9130 Bond Premiums					
9200 Proceeds from Extended-Term Financing					
9300 Interfund Transfers - IN					
9400 Sale of or Compensation for Loss of Fixed Assets					
9710 Transfers from Component Units					
9720 Transfers from Primary Governments					
9910 Other Financing Sources Not Listed in the 9000 Series					
9990 Insurance Recoveries					
5120 Debt Service – Refunded Bonds					
5150 Bond Discounts					
5200 Interfund Transfers – Out	76,651				
5300 Transfers Out to Component Units/Primary Governments					
<b>Total Other Financing Sources (Uses)</b>	<b>(\$76,651)</b>				

LEA : 121136503     Palmerton Area SD

Printed 10/26/2018 3:30:43 PM

Amounts Expressed in Whole Dollars		<u>Capital Reserve (1431</u> <u>(32)</u>	<u>Other Capital Projects</u> <u>Fund</u> <u>(39)</u>	<u>Debt Service</u> <u>(40)</u>	<u>Permanent</u> <u>(90)</u>	<u>Total Governmental</u> <u>Funds</u>
<b>Revenues</b>						
6000	Revenue from Local Sources	79,539	66,811			19,282,140
7000	Revenue from State Sources					12,345,632
8000	Revenue from Federal Sources					417,002
<b>Total Revenues</b>		<b>\$79,539</b>	<b>\$66,811</b>			<b>\$32,044,774</b>
<b>Expenditures</b>						
1000	Instruction					19,113,129
2000	Support Services		101,690			7,533,943
3000	Operation of Non-Instructional Services					941,713
4000	Facilities Acquisition, Construction and Improvement Services		9,599,722			9,599,722
5110	Debt Service					2,155,220
5130	Refund of Prior Year Revenues / Receipts					
<b>Total Expenditures</b>			<b>\$9,701,412</b>			<b>\$39,343,727</b>
<b>Excess (Deficiency) Of Revenues Over Expenditures</b>		<b>\$79,539</b>	<b>(\$9,634,601)</b>			<b>(\$7,298,953)</b>
<b>Other Financing Sources (Uses)</b>						
9110	Face Value of Bonds Issued					
9120	Proceeds from Refunding of Bonds					
9130	Bond Premiums					
9200	Proceeds from Extended-Term Financing					
9300	Interfund Transfers - IN					
9400	Sale of or Compensation for Loss of Fixed Assets					
9710	Transfers from Component Units					
9720	Transfers from Primary Governments					
9910	Other Financing Sources Not Listed in the 9000 Series					
9990	Insurance Recoveries					
5120	Debt Service – Refunded Bonds					
5150	Bond Discounts					
5200	Interfund Transfers – Out					76,651
5300	Transfers Out to Component Units/Primary Governments					
<b>Total Other Financing Sources (Uses)</b>						<b>(\$76,651)</b>

Amounts Expressed in Whole Dollars		<u>General Fund</u> <u>(10)</u>	<u>Public Purpose Trust</u> <u>(27)</u>	<u>Other Compt Approved</u> <u>(28)</u>	<u>Athletic / Activity</u> <u>(29)</u>	<u>Capital Reserve</u> <u>(690.</u> <u>1850)</u> <u>(31)</u>
<b>Special And Extraordinary Items</b>						
9920	Special Items – Gains					
9930	Extraordinary Items – Gains					
5520	Special Items – Losses					
5530	Extraordinary Items – Losses					
<b>Net Change In Fund Balances</b>		<b>\$2,179,458</b>				
<b>Fund Balance</b>						
0001	Fund Balance - Beginning of Fiscal Year	9,801,616				
<b>Fund Balance - End Of Year</b>		<b>\$11,981,074</b>				

Amounts Expressed in Whole Dollars		<u>Capital Reserve (1431</u> <u>(32)</u>	<u>Other Capital Projects</u> <u>Fund</u> <u>(39)</u>	<u>Debt Service</u> <u>(40)</u>	<u>Permanent</u> <u>(90)</u>	<u>Total Governmental</u> <u>Funds</u>
<b>Special And Extraordinary Items</b>						
9920	Special Items – Gains					
9930	Extraordinary Items – Gains					
5520	Special Items – Losses					
5530	Extraordinary Items – Losses					
<b>Net Change In Fund Balances</b>		<b>\$79,539</b>	<b>(\$9,634,601)</b>			<b>(\$7,375,604)</b>
<b>Fund Balance</b>						
0001	Fund Balance - Beginning of Fiscal Year	5,590,286	9,999,220			25,391,122
<b>Fund Balance - End Of Year</b>		<b>\$5,669,825</b>	<b>\$364,619</b>			<b>\$18,015,518</b>

LEA : 121136503     Palmerton Area SD

Printed 10/26/2018 3:30:44 PM

Amounts Expressed in Whole Dollars	Food Service (51)	Child Care Operations (52)	Other Enterprise (58)	TOTAL	Internal Service (60)
<b>Assets And Deferred Outflows Of Resources</b>					
<b>Current Assets</b>					
0100 Cash and Cash Equivalents	14,628			14,628	
0110 Investments					
0130 Due From Other Funds	18,134			18,134	
0141 Due From Other Governments					
0142 State Revenue Receivable	1,160			1,160	
0143 Federal Revenue Receivable	17,676			17,676	
0146 Due from Primary Government					
0147 Due from Component Unit					
0150 Other Receivables	1,420			1,420	
0170 Inventories	40,384			40,384	
0180 Prepaid Expenses (Expenditures)					
0190 Other Current Assets					
<b>Total Current Assets</b>	<b>\$93,402</b>			<b>\$93,402</b>	
<b>Noncurrent Assets</b>					
0211 Land					
0212 Site Improvements (Net)					
0220 Buildings and Building Improvements (Net)					
0230 Machinery, Equipment and Furniture (Net)	208,217			208,217	
0250 Construction in Progress					
0260 Long Term Prepayments					
0290 Other Noncurrent Assets					
<b>Total Noncurrent Assets</b>	<b>\$208,217</b>			<b>\$208,217</b>	
0910 Deferred Outflows of Resources	155,165			155,165	
<b>Total Assets And Deferred Outflows Of Resources</b>	<b>\$456,784</b>			<b>\$456,784</b>	

LEA : 121136503     Palmerton Area SD

Printed 10/26/2018 3:30:44 PM

Amounts Expressed in Whole Dollars	Food Service (51)	Child Care Operations (52)	Other Enterprise (58)	TOTAL	Internal Service (60)
<b>Liabilities And Deferred Inflows Of Resources And Net Position</b>					
<b>Current Liabilities</b>					
0400 Due to Other Funds					
0411 Due to Other Governments					
0413 Due to Component Unit					
0420 Accounts Payable	6,036			6,036	
0430 Contracts Payable					
0440 Current Portion of Long-Term Debt					
0450 Short-Term Payables					
0461 Accrued Salaries and Benefits	46,614			46,614	
0462 Payroll Deductions and Withholding					
0480 Unearned Revenues	6,086			6,086	
0490 Other Current Liabilities					
<b>Total Current Liabilities</b>	<b>\$58,736</b>			<b>\$58,736</b>	
<b>Noncurrent Liabilities</b>					
0510 Bonds Payable					
0520 Extended-Term Financing Agreements Payable					
0530 Lease-Purchase Obligations					
0540 Accumulated Compensated Absences	2,915			2,915	
0550 Authority Lease Obligations					
0560 Other Post-Employment Benefits (OPEB)	44,741			44,741	
0570 Net Pension Liability	1,043,806			1,043,806	
0599 Other Noncurrent Liabilities					
<b>Total Noncurrent Liabilities</b>	<b>\$1,091,462</b>			<b>\$1,091,462</b>	
<b>Total Liabilities</b>	<b>\$1,150,198</b>			<b>\$1,150,198</b>	
0950 Deferred Inflows of Resources	9,057			9,057	
<b>Net Position</b>					
0791 Net Investment in Capital Assets	208,217			208,217	
0008 Restricted Net Position (0792 – 0798)					
0799 Unrestricted Net Position	(910,688)			(910,688)	
<b>Total Net Position</b>	<b>(\$702,471)</b>			<b>(\$702,471)</b>	
<b>Total Liabilities And Deferred Inflows Of Resources And Net Position</b>	<b>\$456,784</b>			<b>\$456,784</b>	

Amounts Expressed in Whole Dollars	<u>Food Service</u> <u>(51)</u>	<u>Child Care Operations</u> <u>(52)</u>	<u>Other Enterprise</u> <u>(58)</u>	<u>TOTAL</u>	<u>Internal Service</u> <u>(60)</u>
<b>Operating Revenues</b>					
6600 Food Service Revenue	397,619			397,619	
0071 Charges for Services					
0072 Other Operating Revenue	14,793			14,793	
<b>Total Operating Revenues</b>	<b>\$412,412</b>			<b>\$412,412</b>	
<b>Operating Expenses</b>					
100 Personnel Services – Salaries	304,050			304,050	
200 Personnel Services – Employee Benefits	151,358			151,358	
300 Purchased Professional and Technical Services					
400 Purchased Property Services					
500 Other Purchased Services	497,083			497,083	
600 Supplies	60,629			60,629	
740 Depreciation	20,749			20,749	
810 Dues and Fees	265			265	
890 Miscellaneous Expenditures					
<b>Total Operating Expenses</b>	<b>\$1,034,134</b>			<b>\$1,034,134</b>	
<b>Operating Income (Loss)</b>	<b>(\$621,722)</b>			<b>(\$621,722)</b>	
<b>Non Operating Revenues (Expenses)</b>					
6500 Earnings on Investments	1,271			1,271	
6920 Contributions and Donations from Private Sources					
6930 Gains or Losses on Sale of Fixed Assets					
6991 Refunds of a Prior Year Expenditure					
7000 Revenue from State Sources	103,609			103,609	
8000 Revenue from Federal Sources	496,482			496,482	
820 Claims and Judgments Against the LEA					
830 Interest					
<b>TOTAL Non Operating Revenues (Expenses)</b>	<b>\$601,362</b>			<b>\$601,362</b>	
<b>Income (Loss) Before Contributions And Transfers</b>	<b>(\$20,360)</b>			<b>(\$20,360)</b>	

Amounts Expressed in Whole Dollars	<u>Food Service</u> <u>(51)</u>	<u>Child Care Operations</u> <u>(52)</u>	<u>Other Enterprise</u> <u>(58)</u>	<u>TOTAL</u>	<u>Internal Service</u> <u>(60)</u>
<b>Contributions, Transfers, and Special and Extraordinary Items</b>					
5200 Interfund Transfers – Out					
5300 Transfers Out to Component Units/Primary Governments					
5520 Special Items – Losses					
5530 Extraordinary Items – Losses					
9300 Interfund Transfers - IN	76,651			76,651	
9500 Capital Contributions					
9700 Transfers IN From Component Units/Primary Governments					
9920 Special Items – Gains					
9930 Extraordinary Items – Gains					
<b>Change In Net Position</b>	<b>\$56,291</b>			<b>\$56,291</b>	
0002 Net Position - Beginning of Fiscal Year	(711,464)			(711,464)	
0003 Accounting Changes / Residual Equity Transfers	(47,298)			(47,298)	
<b>Net Position - End Of Year</b>	<b>(\$702,471)</b>			<b>(\$702,471)</b>	

LEA : 121136503      Palmerton Area SD

Printed 10/26/2018 3:30:48 PM

Amounts Expressed in Whole Dollars	<u>Food Service</u> <u>(51)</u>	<u>Child Care Operations</u> <u>(52)</u>	<u>Other Enterprise</u> <u>(58)</u>	<u>TOTAL</u>	<u>Internal Service(60)</u>
<b>Cash Flows From Operating Activities</b>					
0011 Cash Receipts From Users	444,837			444,837	
0012 Cash Receipts From Assessments Made to Other Funds					
0013 Cash Receipts From Earnings on Investments					
0014 Cash Receipts From Other Operating Revenue	14,793			14,793	
0015 Cash Payments To Employees For Services	443,374			443,374	
0016 Cash Payments For Insurance Claims					
0017 Cash Payments To Suppliers For Goods and Services	603,161			603,161	
0018 Cash Payments For Other Operating Expenses	265			265	
<b>Net Cash Provided By (Used For) Operating Activities</b>	<b>(\$587,170)</b>			<b>(\$587,170)</b>	
<b>Cash Flows From Non-Capital Financing Activities</b>					
0021 Receipts From Local Sources - 6000					
0022 Receipts From State Sources - 7000	102,449			102,449	
0023 Receipts From Federal Sources -8000	414,886			414,886	
0024 Notes and Loans Received (Repaid)					
0025 Interest Paid on Notes/Loans - 5100-830					
0026 Operating Transfers In (Out)/Residual Equity Trans	76,651			76,651	
0027 Operating Transfers In (Out) Primary Government / Comp Unit					
0028 Receipts From Refund of Prior Year Expenditures - 6991					
0029 Special and Extraordinary Gains (losses)					
0030 Receipts from Insurance Recoveries -9990					
<b>Net Cash Prov By (Used for) Non-Capital Financing Activities</b>	<b>\$593,986</b>			<b>\$593,986</b>	
<b>Cash Flows From Capital and Related Financing Activities</b>					
0031 Payments For Fac Acq, Const, and Imp - 4000					
0032 Gain / (Loss) on Sale of Fixed Assets - 6930					
0033 Proceeds From Extended Term Financing - 9200					
0034 Principal Paid on Financing Agreements					
0035 Interest Paid on Financing Agreements - 5100-830					
0036 (Inc) Dec in Contributed Capital					
<b>Net Cash Prov By (Used for) Capital and Related Financing Activities</b>					
<b>Cash Flows From Investing Activities</b>					
0041 Earnings on Investments - 6500	1,271			1,271	
0042 Purchase of Inv Securities / Deposits to Inv Pools					
0043 Receipts From Investment Pool Withdrawals					
0044 Proceeds from Sale and Maturity of Inv Securities					

LEA : 121136503     Palmerton Area SD

Printed 10/26/2018 3:30:48 PM

0045   Loans Received (Paid)

Net Cash Prov By (Used for) Investing Activities	\$1,271	\$1,271
--	---------	---------

LEA : 121136503     Palmerton Area SD

Printed 10/26/2018 3:30:48 PM

	Food Service (51)	Child Care Operations (52)	Other Enterprise (58)	TOTAL	Internal Service (60)
Net Increase (Decrease) in Cash Flows	8,087			8,087	
0004 Cash and Cash Equivalents Beginning of Year	6,541			6,541	
Cash and Cash Equivalents at Year End	\$14,628			\$14,628	
Reconciliation of Operating Income (Loss) To Net Cash Provided by (Used For) Operating Activities					
0005 Operating Income (Loss) per REP	(621,722)			(621,722)	
Adjustments					
0051 Depreciation and Net Amortization	20,749			20,749	
0052 Provision for Uncollectible Accounts					
0053 Other Adjustments	56,056			56,056	
Effect of Changes in Assets, Liabilities, Deferred Outflows and Deferred Inflows					
0054 (Inc) Dec In Accounts Receivable (0120-0150)	47,218			47,218	
0055 Advances to Other Funds (0160)	(76,651)			(76,651)	
0056 (Inc) Dec in Inventories (0170)	(9,284)			(9,284)	
0057 (Inc) Dec in Prepaid Expenses (0180)					
0058 (Inc) Dec in Other Current or Noncurrent Assets					
0064 Deferred Outflows (0910)	87,117			87,117	
0059 Inc (Dec) in Accounts Payable (0400-0450)	(12,995)			(12,995)	
0060 Inc (Dec) in Accrued Salaries/Benefits (0461)	(6,400)			(6,400)	
0065 Inc (Dec) in Net Pension Liabilities (0570)	(63,354)			(63,354)	
0066 Inc (Dec) in Other Postemp Benefit Oblig (0560)	(2,557)			(2,557)	
0061 Inc (Dec) in Payroll Deductions/Withholding (0462)					
0062 Inc (Dec) in Unearned Revenue (0480)	(2,575)			(2,575)	
0063 Inc (Dec) in Other Current or Noncurrent Liabilities					
0067 Deferred Inflows (0950)	(2,772)			(2,772)	
Total Adjustments	\$34,552			\$34,552	
Cash Provided By (Used for) Total	(\$587,170)			(\$587,170)	

COMBINED STATEMENT OF CASH FLOWS  
SCHEDULE OF NONCASH INVESTING, CAPITAL, AND FINANCING ACTIVITIES

Explanation of Transaction and Balance Sheet Effect	Amount
Total	

LEA : 121136503     Palmerton Area SD

Printed 10/26/2018 3:30:49 PM

Amounts Expressed in Whole Dollars	<u>Private Purpose Trust</u> <u>(71)</u>	<u>Investment Trust</u> <u>(72)</u>	<u>Pension Trust</u> <u>(73)</u>	<u>Activity</u> <u>(81)</u>
<b>Assets And Deferred Outflows Of Resources</b>				
<b>Assets</b>				
0100 Cash and Cash Equivalents	16,762			115,303
0110 Investments	78,728			
0130 Due From Other Funds				
0147 Due from Component Unit				
0150 Other Receivables	214			
0170 Inventories				
0180 Prepaid Expenses (Expenditures)				
0190 Other Current Assets				
0220 Buildings and Building Improvements (Net)				
0230 Machinery, Equipment and Furniture (Net)				
<b>Total Assets</b>	<b>\$95,704</b>			<b>\$115,303</b>
0910 Deferred Outflows of Resources				
<b>Total Assets And Deferred Outflows Of Resources</b>	<b>\$95,704</b>			<b>\$115,303</b>

LEA : 121136503     Palmerton Area SD

Printed 10/26/2018 3:30:49 PM

Amounts Expressed in Whole Dollars		<u>Other Agency</u> <u>(89)</u>	<u>Discrete Component Units</u> <u>(98)</u>	<u>Discrete Component Units</u> <u>(99)</u>	<u>Total Fiduciary Funds</u>
<b>Assets And Deferred Outflows Of Resources</b>					
<b>Assets</b>					
0100	Cash and Cash Equivalents				132,065
0110	Investments				78,728
0130	Due From Other Funds				
0147	Due from Component Unit				
0150	Other Receivables				214
0170	Inventories				
0180	Prepaid Expenses (Expenditures)				
0190	Other Current Assets				
0220	Buildings and Building Improvements (Net)				
0230	Machinery, Equipment and Furniture (Net)				
<b>Total Assets</b>					<b>\$211,007</b>
0910	Deferred Outflows of Resources				
<b>Total Assets And Deferred Outflows Of Resources</b>					<b>\$211,007</b>

LEA : 121136503     Palmerton Area SD

Printed 10/26/2018 3:30:49 PM

Amounts Expressed in Whole Dollars	<u>Private Purpose Trust</u> <u>(71)</u>	<u>Investment Trust</u> <u>(72)</u>	<u>Pension Trust</u> <u>(73)</u>	<u>Activity</u> <u>(81)</u>
<b>Liabilities, Deferred Inflows Of Resources And Net Position</b>				
<b>Liabilities</b>				
0400 Due to Other Funds				
0411 Due to Other Governments				
0412 Due to Primary Government				
0413 Due to Component Unit				
0420 Accounts Payable	5,957			774
0430 Contracts Payable				
0450 Short-Term Payables				
0461 Accrued Salaries and Benefits				
0462 Payroll Deductions and Withholding				
0480 Unearned Revenues				
0490 Other Current Liabilities				114,529
<b>Total Liabilities</b>	<b>\$5,957</b>			<b>\$115,303</b>
0950 Deferred Inflows of Resources				
<b>Net Position</b>				
0791 Net Investment in Capital Assets				
0009 Restricted Net Position (0792 – 0798)				
0799 Unrestricted Net Position	89,747			
<b>Total Net Position</b>	<b>\$89,747</b>			
<b>Total Liabilities, Deferred Inflows Of Resources And Net Position</b>	<b>\$95,704</b>			<b>\$115,303</b>

LEA : 121136503     Palmerton Area SD

Printed 10/26/2018 3:30:49 PM

Amounts Expressed in Whole Dollars

<u>Other Agency</u>	<u>Discrete Component Units</u>	<u>Discrete Component Units</u>	<u>Total Fiduciary Funds</u>
(89)	(98)	(99)	

Liabilities, Deferred Inflows Of Resources And Net Position

Liabilities

0400	Due to Other Funds			
0411	Due to Other Governments			
0412	Due to Primary Government			
0413	Due to Component Unit			
0420	Accounts Payable			6,731
0430	Contracts Payable			
0450	Short-Term Payables			
0461	Accrued Salaries and Benefits			
0462	Payroll Deductions and Withholding			
0480	Unearned Revenues			
0490	Other Current Liabilities			114,529
Total Liabilities				\$121,260

0950 Deferred Inflows of Resources

Net Position

0791	Net Investment in Capital Assets			
0009	Restricted Net Position (0792 – 0798)			
0799	Unrestricted Net Position			89,747
Total Net Position				\$89,747
Total Liabilities, Deferred Inflows Of Resources And Net Position				\$211,007

LEA : 121136503     Palmerton Area SD

Printed 10/26/2018 3:30:49 PM

Amounts Expressed in Whole Dollars	<u>Private Purpose Trust</u> <u>(71)</u>	<u>Investment Trust</u> <u>(72)</u>	<u>Pension Trust</u> <u>(73)</u>	<u>Discrete Component</u> <u>Units</u> <u>(98)</u>	<u>Discrete Component</u> <u>Units</u> <u>(99)</u>	<u>Total Fiduciary</u> <u>Funds</u>
<b>Additions</b>						
0091 Gifts and Contributions	2,978					2,978
0092 Other Additions	4,390					4,390
<b>Deductions</b>						
0093 Scholarships Awarded	10,225					10,225
0094 Other Deductions	453					453
<b>Change In Net Position</b>	<b>(\$3,310)</b>					<b>(\$3,310)</b>
0006 Net Position – Beginning of Fiscal Year	93,057					93,057
0007 Net Position Held in Trust for Pension Benefits						
<b>Net Position - End of Fiscal Year</b>	<b>\$89,747</b>					<b>\$89,747</b>

LEA : 121136503     Palmerton Area SD

General Fund (10)

Printed 10/26/2018 3:30:50 PM

Page - 1 of 3

	Revenue Reported In Current Year	Current Year Tax Accrual	Prior Year Tax Accrual	Taxes Collected In Current Year
<b>Revenue from Local Sources</b>				
6111 Current Real Estate Taxes	15,723,326.32			15,723,326.32
6113 Public Utility Realty Taxes	18,301.23			18,301.23
6114 Payments in Lieu of Current Taxes - State / Local	5,100.86			5,100.86
6120 Current Per Capita Taxes, Section 679	34,617.10			34,617.10
6141 Current Act 511 Per Capita Taxes	34,617.10			34,617.10
6143 Current Act 511 Local Services Taxes	17,039.09	325.05		16,714.04
6151 Current Act 511 Earned Income Taxes	1,553,661.71	10,199.19	2,327.69	1,545,790.21
6153 Current Act 511 Real Estate Transfer Taxes	202,120.81	18,872.14	43,570.02	226,818.69
6411 Delinquent Real Estate Taxes	908,932.52	241,128.33	256,942.52	924,746.71
6420 Delinquent Per Capita Taxes, Section 679	8,544.05	2,566.55	3,606.87	9,584.37
6440 Delinquent Local Enabling Taxes - Flat Rate Assessments	8,544.05	2,566.55	3,606.86	9,584.36
6500 Earnings on Investments	202,763.77			
6700 Revenues from LEA Activities	31,425.00			
6821 State Revenue Received from Other Pennsylvania Public LEAs	500.00			
6831 Federal Revenue Received from Other Pennsylvania Public LEAs	8,836.00			
6832 Federal IDEA Revenue Received as Pass Through	339,406.96			
6910 Rentals	375.00			
6920 Contributions and Donations from Private Sources	11,885.20			
6942 Summer School Tuition	1,340.00			
6944 Receipts from Other LEAs in Pennsylvania - Education	11,589.61			
6999 Other Revenues Not Specified Above	12,863.65			
<b>TOTAL Revenue from Local Sources</b>	<b>\$19,135,790.03</b>	<b>\$275,657.81</b>	<b>\$310,053.96</b>	<b>\$18,549,200.99</b>

	Revenue Reported In Current Year			
<b>Revenue from State Sources</b>				
7110 Basic Education Funding	6,572,284.71			
7160 Tuition for Orphans Subsidy	47,766.02			
7271 Special Education funds for School-Aged Pupils	1,140,827.10			
7311 Pupil Transportation Subsidy	412,969.99			
7312 Nonpublic and Charter School Pupil Transportation Subsidy	31,955.00			
7320 Rental and Sinking Fund Payments / Building Reimbursement Subsidy	422,541.78			
7330 Health Services (Medical, Dental, Nurse, Act 25)	34,037.91			
7340 State Property Tax Reduction Allocation	749,193.40			
7505 Ready to Learn Block Grant	303,548.00			
7810 State Share of Social Security and Medicare Taxes	491,113.52			
7820 State Share of Retirement Contributions	2,139,394.60			
<b>TOTAL Revenue from State Sources</b>	<b>\$12,345,632.03</b>			

	Revenue Reported In Current Year			
<b><u>Revenue from Federal Sources</u></b>				
8514 NCLB, Title I - Improving the Academic Achievement of the Disadvantaged	346,122.30			
8515 NCLB, Title II - Preparing, Training and Recruiting High Quality Teachers and Principals	60,880.00			
8517 NCLB, Title IV - 21St Century Schools	10,000.00			
<b>TOTAL Revenue from Federal Sources</b>	<b>\$417,002.30</b>			
<b>TOTAL FROM ALL SOURCES</b>	<b>\$31,898,424.36</b>	<b>\$275,657.81</b>	<b>\$310,053.96</b>	<b>\$18,549,200.99</b>

Revenue from Local Sources	19,135,790.03
Revenue from State Sources	12,345,632.03
Revenue from Federal Sources	417,002.30
Other Financing Sources	
<b>TOTAL FROM ALL SOURCES</b>	<b>\$31,898,424.36</b>

LEA : 121136503     Palmerton Area SD

Printed 10/26/2018 3:30:53 PM

General Fund (10)

1000 Instruction		Total
100 <u>Personnel Services – Salaries</u>		
100 Personnel Services – Salaries		8,502,765.64
Total Personnel Services – Salaries		\$8,502,765.64
200 <u>Personnel Services – Employee Benefits</u>		
210 Group Insurance – Contracted Provider		1,331,245.80
220 Social Security Contributions		638,925.79
230 PSERS Retirement Contributions		2,733,860.00
250 Unemployment Compensation		6,425.98
260 Workers' Compensation		89,570.45
280 Other Post-Employment Benefits (OPEB)		87,786.32
Total Personnel Services – Employee Benefits		\$4,887,814.34
300 <u>Purchased Professional and Technical Services</u>		
322 Professional Educational Services – Ius		1,097,271.01
324 Professional Educational Services – Employee Training and Development Services		1,177.80
329 Professional Educational Services – Other		10,279.50
330 Other Professional Services		54,729.02
340 Technical Services		69,737.04
Total Purchased Professional and Technical Services		\$1,233,194.37
400 <u>Purchased Property Services</u>		
430 Repairs and Maintenance Services		11,510.95
440 Rentals		38,120.22
Total Purchased Property Services		\$49,631.17
500 <u>Other Purchased Services</u>		
510 Student Transportation Services		12,583.00
530 Communications		4,726.85
550 Printing and Binding		40.00
561 Tuition To Other School Districts Within the State		24,593.86
562 Tuition To Pennsylvania Charter Schools		882,312.77
563 Tuition To Nonpublic Schools		704,928.15
564 Tuition To Career and Technology Centers		2,208,238.60
566 Tuition To Institutions of Higher Education and Technical Institutes		197,693.00
568 Tuition To Private Residential Rehabilitative Institutions (PRRI) [In-State] and Detention Centers		11,901.43
580 Travel		4,141.86
591 Services Purchased Locally		376.20
Total Other Purchased Services		\$4,051,535.72
600 <u>Supplies</u>		
610 General Supplies		168,551.22
630 Food		2,977.44
640 Books and Periodicals		71,615.23
650 Supplies & Fees – Technology Related		28,125.63
Total Supplies		\$271,269.52
700 <u>Property</u>		
756 Capitalized Technology Hardware and Equipment – Original		9,553.67

LEA : 121136503     Palmerton Area SD

Printed 10/26/2018 3:30:53 PM

<b>General Fund (10)</b>		
<b>1000 Instruction</b>		<b><u>Total</u></b>
<b>700 <u>Property</u></b>		
766 Capitalized Technology Hardware and Equipment – Replacement	105,667.96	
768 Capitalized Technology Software - Replacement	400.00	
<b>Total Property</b>	<b>\$115,621.63</b>	
<b>800 <u>Other Objects</u></b>		
810 Dues and Fees	1,297.00	
<b>Total Other Objects</b>	<b>\$1,297.00</b>	
<b>Total 1000 Instruction</b>	<b>\$19,113,129.39</b>	

LEA : 121136503     Palmerton Area SD

Printed 10/26/2018 3:30:53 PM

General Fund (10)

1100 Regular Programs – Elementary / Secondary	Elementary	Secondary	Federal	Total
<b>100 Personnel Services – Salaries</b>				
100 Personnel Services – Salaries	3,626,774.53	2,859,239.98	242,144.99	6,728,159.50
<b>Total Personnel Services – Salaries</b>	<b>\$3,626,774.53</b>	<b>\$2,859,239.98</b>	<b>\$242,144.99</b>	<b>\$6,728,159.50</b>
<b>200 Personnel Services – Employee Benefits</b>				
210 Group Insurance – Contracted Provider	735,747.94	369,022.70	68,028.96	1,172,799.60
220 Social Security Contributions	271,402.87	215,476.05	18,112.01	504,990.93
230 PSERS Retirement Contributions	1,169,739.91	916,364.29	78,801.71	2,164,905.91
250 Unemployment Compensation	4.02	6,421.96		6,425.98
260 Workers' Compensation	38,150.27	30,191.48	2,544.64	70,886.39
280 Other Post-Employment Benefits (OPEB)	63,132.96	24,653.36		87,786.32
<b>Total Personnel Services – Employee Benefits</b>	<b>\$2,278,177.97</b>	<b>\$1,562,129.84</b>	<b>\$167,487.32</b>	<b>\$4,007,795.13</b>
<b>300 Purchased Professional and Technical Services</b>				
324 Professional Educational Services – Employee Training and Development Services	52.00	60.00		112.00
329 Professional Educational Services – Other	2,786.25	2,786.25		5,572.50
340 Technical Services	34,868.52	34,868.52		69,737.04
<b>Total Purchased Professional and Technical Services</b>	<b>\$37,706.77</b>	<b>\$37,714.77</b>		<b>\$75,421.54</b>
<b>400 Purchased Property Services</b>				
430 Repairs and Maintenance Services	4,700.07	4,999.43		9,699.50
440 Rentals	23,297.18	14,823.04		38,120.22
<b>Total Purchased Property Services</b>	<b>\$27,997.25</b>	<b>\$19,822.47</b>		<b>\$47,819.72</b>
<b>500 Other Purchased Services</b>				
510 Student Transportation Services	5,102.66	263.34		5,366.00
530 Communications	912.33	912.33		1,824.66
562 Tuition To Pennsylvania Charter Schools	360,878.00	360,878.00		721,756.00
580 Travel	157.63	281.97		439.60
591 Services Purchased Locally	376.20			376.20
<b>Total Other Purchased Services</b>	<b>\$367,426.82</b>	<b>\$362,335.64</b>		<b>\$729,762.46</b>
<b>600 Supplies</b>				
610 General Supplies	78,491.48	73,399.76		151,891.24
630 Food		2,902.04		2,902.04
640 Books and Periodicals	39,592.69	31,420.31		71,013.00
650 Supplies & Fees – Technology Related	10,542.10	11,937.19		22,479.29
<b>Total Supplies</b>	<b>\$128,626.27</b>	<b>\$119,659.30</b>		<b>\$248,285.57</b>
<b>700 Property</b>				
756 Capitalized Technology Hardware and Equipment – Original	5,803.44	3,750.23		9,553.67
766 Capitalized Technology Hardware and Equipment – Replacement	51,710.02	53,957.94		105,667.96
768 Capitalized Technology Software - Replacement	400.00			400.00
<b>Total Property</b>	<b>\$57,913.46</b>	<b>\$57,708.17</b>		<b>\$115,621.63</b>
<b>800 Other Objects</b>				
810 Dues and Fees		491.00		491.00
<b>Total Other Objects</b>		<b>\$491.00</b>		<b>\$491.00</b>
<b>Total 1100 Regular Programs – Elementary / Secondary</b>	<b>\$6,524,623.07</b>	<b>\$5,019,101.17</b>	<b>\$409,632.31</b>	<b>\$11,953,356.55</b>

LEA : 121136503     Palmerton Area SD

Printed 10/26/2018 3:30:53 PM

General Fund (10)

1110 Regular Programs

	Elementary	Secondary	Federal	Total
<b>100 <u>Personnel Services – Salaries</u></b>				
100 Personnel Services – Salaries	3,626,774.53	2,859,239.98	40,433.55	6,526,448.06
<b>Total Personnel Services – Salaries</b>	<b>\$3,626,774.53</b>	<b>\$2,859,239.98</b>	<b>\$40,433.55</b>	<b>\$6,526,448.06</b>
<b>200 <u>Personnel Services – Employee Benefits</u></b>				
210 Group Insurance – Contracted Provider	735,747.94	369,022.70	13,816.92	1,118,587.56
220 Social Security Contributions	271,402.87	215,476.05	3,033.24	489,912.16
230 PSERS Retirement Contributions	1,169,739.91	916,364.29	13,171.19	2,099,275.39
250 Unemployment Compensation	4.02	6,421.96		6,425.98
260 Workers' Compensation	38,150.27	30,191.48	425.10	68,766.85
280 Other Post-Employment Benefits (OPEB)	63,132.96	24,653.36		87,786.32
<b>Total Personnel Services – Employee Benefits</b>	<b>\$2,278,177.97</b>	<b>\$1,562,129.84</b>	<b>\$30,446.45</b>	<b>\$3,870,754.26</b>
<b>300 <u>Purchased Professional and Technical Services</u></b>				
324 Professional Educational Services – Employee Training and Development Services	52.00	60.00		112.00
329 Professional Educational Services – Other	2,786.25	2,786.25		5,572.50
340 Technical Services	34,868.52	34,868.52		69,737.04
<b>Total Purchased Professional and Technical Services</b>	<b>\$37,706.77</b>	<b>\$37,714.77</b>		<b>\$75,421.54</b>
<b>400 <u>Purchased Property Services</u></b>				
430 Repairs and Maintenance Services	4,700.07	4,999.43		9,699.50
440 Rentals	23,297.18	14,823.04		38,120.22
<b>Total Purchased Property Services</b>	<b>\$27,997.25</b>	<b>\$19,822.47</b>		<b>\$47,819.72</b>
<b>500 <u>Other Purchased Services</u></b>				
510 Student Transportation Services	5,102.66	263.34		5,366.00
530 Communications	912.33	912.33		1,824.66
562 Tuition To Pennsylvania Charter Schools	360,878.00	360,878.00		721,756.00
580 Travel	157.63	281.97		439.60
591 Services Purchased Locally	376.20			376.20
<b>Total Other Purchased Services</b>	<b>\$367,426.82</b>	<b>\$362,335.64</b>		<b>\$729,762.46</b>
<b>600 <u>Supplies</u></b>				
610 General Supplies	78,491.48	73,399.76		151,891.24
630 Food		2,902.04		2,902.04
640 Books and Periodicals	39,592.69	31,420.31		71,013.00
650 Supplies & Fees – Technology Related	10,542.10	11,937.19		22,479.29
<b>Total Supplies</b>	<b>\$128,626.27</b>	<b>\$119,659.30</b>		<b>\$248,285.57</b>
<b>700 <u>Property</u></b>				
756 Capitalized Technology Hardware and Equipment – Original	5,803.44	3,750.23		9,553.67
766 Capitalized Technology Hardware and Equipment – Replacement	51,710.02	53,957.94		105,667.96
768 Capitalized Technology Software - Replacement	400.00			400.00
<b>Total Property</b>	<b>\$57,913.46</b>	<b>\$57,708.17</b>		<b>\$115,621.63</b>
<b>800 <u>Other Objects</u></b>				
810 Dues and Fees		491.00		491.00
<b>Total Other Objects</b>		<b>\$491.00</b>		<b>\$491.00</b>
<b>Total 1110 Regular Programs</b>	<b>\$6,524,623.07</b>	<b>\$5,019,101.17</b>	<b>\$70,880.00</b>	<b>\$11,614,604.24</b>

LEA : 121136503     Palmerton Area SD

Printed 10/26/2018 3:30:53 PM

General Fund (10)

1190 Federally-Funded Regular Programs

	<u>Elementary</u>	<u>Secondary</u>	<u>Federal</u>	<u>Total</u>
<b>100 <u>Personnel Services – Salaries</u></b>				
100 Personnel Services – Salaries			201,711.44	201,711.44
<b>Total Personnel Services – Salaries</b>			<b>\$201,711.44</b>	<b>\$201,711.44</b>
<b>200 <u>Personnel Services – Employee Benefits</u></b>				
210 Group Insurance – Contracted Provider			54,212.04	54,212.04
220 Social Security Contributions			15,078.77	15,078.77
230 PSERS Retirement Contributions			65,630.52	65,630.52
260 Workers' Compensation			2,119.54	2,119.54
<b>Total Personnel Services – Employee Benefits</b>			<b>\$137,040.87</b>	<b>\$137,040.87</b>
<b>Total 1190 Federally-Funded Regular Programs</b>			<b>\$338,752.31</b>	<b>\$338,752.31</b>

LEA : 121136503     Palmerton Area SD

Printed 10/26/2018 3:30:53 PM

<b>General Fund (10)</b>				
<b>1200 Special Programs – Elementary / Secondary</b>	<b><u>Elementary</u></b>	<b><u>Secondary</u></b>	<b><u>Federal</u></b>	<b><u>Total</u></b>
<b>100 <u>Personnel Services – Salaries</u></b>				
100 Personnel Services – Salaries	734,484.22	481,081.92	240,873.52	1,456,439.66
<b>Total Personnel Services – Salaries</b>	<b>\$734,484.22</b>	<b>\$481,081.92</b>	<b>\$240,873.52</b>	<b>\$1,456,439.66</b>
<b>200 <u>Personnel Services – Employee Benefits</u></b>				
210 Group Insurance – Contracted Provider	106,665.23	13,351.98		120,017.21
220 Social Security Contributions	56,076.43	36,446.95	17,518.65	110,042.03
230 PSERS Retirement Contributions	240,171.44	150,663.74	74,685.19	465,520.37
260 Workers' Compensation	7,855.17	5,066.91	2,412.75	15,334.83
<b>Total Personnel Services – Employee Benefits</b>	<b>\$410,768.27</b>	<b>\$205,529.58</b>	<b>\$94,616.59</b>	<b>\$710,914.44</b>
<b>300 <u>Purchased Professional and Technical Services</u></b>				
322 Professional Educational Services – Ius	548,635.51	548,635.50		1,097,271.01
324 Professional Educational Services – Employee Training and Development Services	532.90	532.90		1,065.80
330 Other Professional Services	28,384.52	26,344.50		54,729.02
<b>Total Purchased Professional and Technical Services</b>	<b>\$577,552.93</b>	<b>\$575,512.90</b>		<b>\$1,153,065.83</b>
<b>500 <u>Other Purchased Services</u></b>				
510 Student Transportation Services	3,677.84	3,539.16		7,217.00
530 Communications	1,451.10	1,451.09		2,902.19
550 Printing and Binding	20.00	20.00		40.00
561 Tuition To Other School Districts Within the State	12,296.93	12,296.93		24,593.86
562 Tuition To Pennsylvania Charter Schools	80,278.39	80,278.38		160,556.77
563 Tuition To Nonpublic Schools	278,213.38	278,213.37		556,426.75
564 Tuition To Career and Technology Centers		305,790.00		305,790.00
568 Tuition To Private Residential Rehabilitative Institutions (PRRI) [In-State] and Detention Centers	5,950.72	5,950.71		11,901.43
580 Travel	1,851.13	1,851.13		3,702.26
<b>Total Other Purchased Services</b>	<b>\$383,739.49</b>	<b>\$689,390.77</b>		<b>\$1,073,130.26</b>
<b>600 <u>Supplies</u></b>				
610 General Supplies	5,025.76	3,643.05		8,668.81
630 Food	37.70	37.70		75.40
640 Books and Periodicals	181.97	306.24		488.21
650 Supplies & Fees – Technology Related	3,136.28	2,389.28		5,525.56
<b>Total Supplies</b>	<b>\$8,381.71</b>	<b>\$6,376.27</b>		<b>\$14,757.98</b>
<b>800 <u>Other Objects</u></b>				
810 Dues and Fees	403.00	403.00		806.00
<b>Total Other Objects</b>	<b>\$403.00</b>	<b>\$403.00</b>		<b>\$806.00</b>
<b>Total 1200 Special Programs – Elementary / Secondary</b>	<b>\$2,115,329.62</b>	<b>\$1,958,294.44</b>	<b>\$335,490.11</b>	<b>\$4,409,114.17</b>

LEA : 121136503     Palmerton Area SD

Printed 10/26/2018 3:30:53 PM

<b>General Fund (10)</b>				
<b>1210 Life Skills Support</b>	<b><u>Elementary</u></b>	<b><u>Secondary</u></b>	<b><u>Federal</u></b>	<b><u>Total</u></b>
<b>100 <u>Personnel Services – Salaries</u></b>				
100 Personnel Services – Salaries	143,457.35	74,597.82		218,055.17
<b>Total Personnel Services – Salaries</b>	<b>\$143,457.35</b>	<b>\$74,597.82</b>		<b>\$218,055.17</b>
<b>200 <u>Personnel Services – Employee Benefits</u></b>				
210 Group Insurance – Contracted Provider	6,026.88	6,324.88		12,351.76
220 Social Security Contributions	10,912.47	5,644.93		16,557.40
230 PSERS Retirement Contributions	45,310.34	24,278.61		69,588.95
260 Workers' Compensation	1,509.68	785.49		2,295.17
<b>Total Personnel Services – Employee Benefits</b>	<b>\$63,759.37</b>	<b>\$37,033.91</b>		<b>\$100,793.28</b>
<b>300 <u>Purchased Professional and Technical Services</u></b>				
324 Professional Educational Services – Employee Training and Development Services	177.50	177.50		355.00
330 Other Professional Services	2,040.00			2,040.00
<b>Total Purchased Professional and Technical Services</b>	<b>\$2,217.50</b>	<b>\$177.50</b>		<b>\$2,395.00</b>
<b>500 <u>Other Purchased Services</u></b>				
510 Student Transportation Services	3,377.84	3,239.16		6,617.00
<b>Total Other Purchased Services</b>	<b>\$3,377.84</b>	<b>\$3,239.16</b>		<b>\$6,617.00</b>
<b>600 <u>Supplies</u></b>				
610 General Supplies	1,883.76	2,809.20		4,692.96
630 Food	37.70	37.70		75.40
650 Supplies & Fees – Technology Related	1,673.90	926.90		2,600.80
<b>Total Supplies</b>	<b>\$3,595.36</b>	<b>\$3,773.80</b>		<b>\$7,369.16</b>
<b>Total 1210 Life Skills Support</b>	<b>\$216,407.42</b>	<b>\$118,822.19</b>		<b>\$335,229.61</b>

LEA : 121136503     Palmerton Area SD

Printed 10/26/2018 3:30:53 PM

General Fund (10)				
1220 Sensory Support	<u>Elementary</u>	<u>Secondary</u>	<u>Federal</u>	<u>Total</u>
100 <u>Personnel Services – Salaries</u>				
100 Personnel Services – Salaries	127,969.88	19,958.51	11,566.61	159,495.00
<b>Total Personnel Services – Salaries</b>	<b>\$127,969.88</b>	<b>\$19,958.51</b>	<b>\$11,566.61</b>	<b>\$159,495.00</b>
200 <u>Personnel Services – Employee Benefits</u>				
210 Group Insurance – Contracted Provider	31,816.72	4,513.96		36,330.68
220 Social Security Contributions	10,411.05	1,500.22		11,911.27
230 PSERS Retirement Contributions	45,382.41	6,485.55		51,867.96
260 Workers' Compensation	1,471.31	209.80		1,681.11
<b>Total Personnel Services – Employee Benefits</b>	<b>\$89,081.49</b>	<b>\$12,709.53</b>		<b>\$101,791.02</b>
300 <u>Purchased Professional and Technical Services</u>				
330 Other Professional Services	14,892.48	14,892.47		29,784.95
<b>Total Purchased Professional and Technical Services</b>	<b>\$14,892.48</b>	<b>\$14,892.47</b>		<b>\$29,784.95</b>
600 <u>Supplies</u>				
610 General Supplies	953.06	128.56		1,081.62
<b>Total Supplies</b>	<b>\$953.06</b>	<b>\$128.56</b>		<b>\$1,081.62</b>
<b>Total 1220 Sensory Support</b>	<b>\$232,896.91</b>	<b>\$47,689.07</b>	<b>\$11,566.61</b>	<b>\$292,152.59</b>

LEA : 121136503     Palmerton Area SD

Printed 10/26/2018 3:30:53 PM

General Fund (10)

1240 Academic Support

	Elementary	Secondary	Federal	Total
<b>100 <u>Personnel Services – Salaries</u></b>				
100 Personnel Services – Salaries	463,056.99	386,525.59	229,306.91	1,078,889.49
<b>Total Personnel Services – Salaries</b>	<b>\$463,056.99</b>	<b>\$386,525.59</b>	<b>\$229,306.91</b>	<b>\$1,078,889.49</b>
<b>200 <u>Personnel Services – Employee Benefits</u></b>				
210 Group Insurance – Contracted Provider	68,821.63	2,513.14		71,334.77
220 Social Security Contributions	34,752.91	29,301.80	17,518.65	81,573.36
230 PSERS Retirement Contributions	149,478.69	119,899.58	74,685.19	344,063.46
260 Workers' Compensation	4,874.18	4,071.62	2,412.75	11,358.55
<b>Total Personnel Services – Employee Benefits</b>	<b>\$257,927.41</b>	<b>\$155,786.14</b>	<b>\$94,616.59</b>	<b>\$508,330.14</b>
<b>300 <u>Purchased Professional and Technical Services</u></b>				
322 Professional Educational Services – Ius	913.00	913.00		1,826.00
324 Professional Educational Services – Employee Training and Development Services	355.40	355.40		710.80
330 Other Professional Services	11,452.04	11,452.03		22,904.07
<b>Total Purchased Professional and Technical Services</b>	<b>\$12,720.44</b>	<b>\$12,720.43</b>		<b>\$25,440.87</b>
<b>500 <u>Other Purchased Services</u></b>				
510 Student Transportation Services	300.00	300.00		600.00
530 Communications	1,451.10	1,451.09		2,902.19
550 Printing and Binding	20.00	20.00		40.00
562 Tuition To Pennsylvania Charter Schools	80,278.39	80,278.38		160,556.77
564 Tuition To Career and Technology Centers		305,790.00		305,790.00
580 Travel	1,851.13	1,851.13		3,702.26
<b>Total Other Purchased Services</b>	<b>\$83,900.62</b>	<b>\$389,690.60</b>		<b>\$473,591.22</b>
<b>600 <u>Supplies</u></b>				
610 General Supplies	2,188.94	705.29		2,894.23
640 Books and Periodicals	181.97	306.24		488.21
650 Supplies & Fees – Technology Related	1,462.38	1,462.38		2,924.76
<b>Total Supplies</b>	<b>\$3,833.29</b>	<b>\$2,473.91</b>		<b>\$6,307.20</b>
<b>800 <u>Other Objects</u></b>				
810 Dues and Fees	403.00	403.00		806.00
<b>Total Other Objects</b>	<b>\$403.00</b>	<b>\$403.00</b>		<b>\$806.00</b>
<b>Total 1240 Academic Support</b>	<b>\$821,841.75</b>	<b>\$947,599.67</b>	<b>\$323,923.50</b>	<b>\$2,093,364.92</b>

LEA : 121136503     Palmerton Area SD

Printed 10/26/2018 3:30:53 PM

General Fund (10)

1241 Learning Support – Public	Elementary	Secondary	Federal	Total
100 <u>Personnel Services – Salaries</u>				
100 Personnel Services – Salaries	449,023.72	376,593.45	229,306.91	1,054,924.08
<b>Total Personnel Services – Salaries</b>	<b>\$449,023.72</b>	<b>\$376,593.45</b>	<b>\$229,306.91</b>	<b>\$1,054,924.08</b>
200 <u>Personnel Services – Employee Benefits</u>				
210 Group Insurance – Contracted Provider	66,648.05	2,490.34		69,138.39
220 Social Security Contributions	33,720.01	28,542.08	17,518.65	79,780.74
230 PSERS Retirement Contributions	144,917.45	116,671.93	74,685.19	336,274.57
260 Workers' Compensation	4,726.11	3,967.31	2,412.75	11,106.17
<b>Total Personnel Services – Employee Benefits</b>	<b>\$250,011.62</b>	<b>\$151,671.66</b>	<b>\$94,616.59</b>	<b>\$496,299.87</b>
300 <u>Purchased Professional and Technical Services</u>				
322 Professional Educational Services – Ius	913.00	913.00		1,826.00
330 Other Professional Services	11,452.04	11,452.03		22,904.07
<b>Total Purchased Professional and Technical Services</b>	<b>\$12,365.04</b>	<b>\$12,365.03</b>		<b>\$24,730.07</b>
500 <u>Other Purchased Services</u>				
530 Communications	1,451.10	1,451.09		2,902.19
550 Printing and Binding	20.00	20.00		40.00
562 Tuition To Pennsylvania Charter Schools	80,278.39	80,278.38		160,556.77
564 Tuition To Career and Technology Centers		305,790.00		305,790.00
580 Travel	1,851.13	1,851.13		3,702.26
<b>Total Other Purchased Services</b>	<b>\$83,600.62</b>	<b>\$389,390.60</b>		<b>\$472,991.22</b>
600 <u>Supplies</u>				
610 General Supplies	1,925.40	705.29		2,630.69
640 Books and Periodicals		306.24		306.24
650 Supplies & Fees – Technology Related	1,462.38	1,462.38		2,924.76
<b>Total Supplies</b>	<b>\$3,387.78</b>	<b>\$2,473.91</b>		<b>\$5,861.69</b>
800 <u>Other Objects</u>				
810 Dues and Fees	315.00	315.00		630.00
<b>Total Other Objects</b>	<b>\$315.00</b>	<b>\$315.00</b>		<b>\$630.00</b>
<b>Total 1241 Learning Support – Public</b>	<b>\$798,703.78</b>	<b>\$932,809.65</b>	<b>\$323,923.50</b>	<b>\$2,055,436.93</b>

LEA : 121136503     Palmerton Area SD

Printed 10/26/2018 3:30:53 PM

General Fund (10)

1243 Gifted Support

	Elementary	Secondary	Federal	Total
<b>100 <u>Personnel Services – Salaries</u></b>				
100 Personnel Services – Salaries	14,033.27	9,932.14		23,965.41
<b>Total Personnel Services – Salaries</b>	<b>\$14,033.27</b>	<b>\$9,932.14</b>		<b>\$23,965.41</b>
<b>200 <u>Personnel Services – Employee Benefits</u></b>				
210 Group Insurance – Contracted Provider	2,173.58	22.80		2,196.38
220 Social Security Contributions	1,032.90	759.72		1,792.62
230 PSERS Retirement Contributions	4,561.24	3,227.65		7,788.89
260 Workers' Compensation	148.07	104.31		252.38
<b>Total Personnel Services – Employee Benefits</b>	<b>\$7,915.79</b>	<b>\$4,114.48</b>		<b>\$12,030.27</b>
<b>300 <u>Purchased Professional and Technical Services</u></b>				
324 Professional Educational Services – Employee Training and Development Services	355.40	355.40		710.80
<b>Total Purchased Professional and Technical Services</b>	<b>\$355.40</b>	<b>\$355.40</b>		<b>\$710.80</b>
<b>500 <u>Other Purchased Services</u></b>				
510 Student Transportation Services	300.00	300.00		600.00
<b>Total Other Purchased Services</b>	<b>\$300.00</b>	<b>\$300.00</b>		<b>\$600.00</b>
<b>600 <u>Supplies</u></b>				
610 General Supplies	263.54			263.54
640 Books and Periodicals	181.97			181.97
<b>Total Supplies</b>	<b>\$445.51</b>			<b>\$445.51</b>
<b>800 <u>Other Objects</u></b>				
810 Dues and Fees	88.00	88.00		176.00
<b>Total Other Objects</b>	<b>\$88.00</b>	<b>\$88.00</b>		<b>\$176.00</b>
<b>Total 1243 Gifted Support</b>	<b>\$23,137.97</b>	<b>\$14,790.02</b>		<b>\$37,927.99</b>

LEA : 121136503     Palmerton Area SD

Printed 10/26/2018 3:30:53 PM

General Fund (10)				
1290 Special Programs - Other Support	<u>Elementary</u>	<u>Secondary</u>	<u>Federal</u>	<u>Total</u>
300 <u>Purchased Professional and Technical Services</u>				
322 Professional Educational Services – Ius	547,722.51	547,722.50		1,095,445.01
<b>Total Purchased Professional and Technical Services</b>	<b>\$547,722.51</b>	<b>\$547,722.50</b>		<b>\$1,095,445.01</b>
500 <u>Other Purchased Services</u>				
561 Tuition To Other School Districts Within the State	12,296.93	12,296.93		24,593.86
563 Tuition To Nonpublic Schools	278,213.38	278,213.37		556,426.75
568 Tuition To Private Residential Rehabilitative Institutions (PRRI) [In-State] and Detention Centers	5,950.72	5,950.71		11,901.43
<b>Total Other Purchased Services</b>	<b>\$296,461.03</b>	<b>\$296,461.01</b>		<b>\$592,922.04</b>
<b>Total 1290 Special Programs - Other Support</b>	<b>\$844,183.54</b>	<b>\$844,183.51</b>		<b>\$1,688,367.05</b>

LEA : 121136503     Palmerton Area SD

Printed 10/26/2018 3:30:53 PM

General Fund (10)

1300 Vocational Education

	Elementary	Secondary	Federal	Total
<b>100 Personnel Services – Salaries</b>				
100 Personnel Services – Salaries		297,554.00		297,554.00
<b>Total Personnel Services – Salaries</b>		<b>\$297,554.00</b>		<b>\$297,554.00</b>
<b>200 Personnel Services – Employee Benefits</b>				
210 Group Insurance – Contracted Provider		38,428.99		38,428.99
220 Social Security Contributions		22,315.80		22,315.80
230 PSERS Retirement Contributions		96,720.25		96,720.25
260 Workers' Compensation		3,132.38		3,132.38
<b>Total Personnel Services – Employee Benefits</b>		<b>\$160,597.42</b>		<b>\$160,597.42</b>
<b>400 Purchased Property Services</b>				
430 Repairs and Maintenance Services		1,811.45		1,811.45
<b>Total Purchased Property Services</b>		<b>\$1,811.45</b>		<b>\$1,811.45</b>
<b>500 Other Purchased Services</b>				
564 Tuition To Career and Technology Centers		1,902,448.60		1,902,448.60
<b>Total Other Purchased Services</b>		<b>\$1,902,448.60</b>		<b>\$1,902,448.60</b>
<b>600 Supplies</b>				
610 General Supplies		7,991.17		7,991.17
640 Books and Periodicals		114.02		114.02
650 Supplies & Fees – Technology Related		120.78		120.78
<b>Total Supplies</b>		<b>\$8,225.97</b>		<b>\$8,225.97</b>
<b>Total 1300 Vocational Education</b>		<b>\$2,370,637.44</b>		<b>\$2,370,637.44</b>

LEA : 121136503     Palmerton Area SD

Printed 10/26/2018 3:30:53 PM

General Fund (10)

1400 Other Instructional Programs – Elementary / Secondary	<u>Elementary</u>	<u>Secondary</u>	<u>Federal</u>	<u>Total</u>
<b>100 <u>Personnel Services – Salaries</u></b>				
100 Personnel Services – Salaries	600.00	20,012.48		20,612.48
<b>Total Personnel Services – Salaries</b>	<b>\$600.00</b>	<b>\$20,012.48</b>		<b>\$20,612.48</b>
<b>200 <u>Personnel Services – Employee Benefits</u></b>				
220 Social Security Contributions	45.90	1,531.13		1,577.03
230 PSERS Retirement Contributions	195.41	6,518.06		6,713.47
260 Workers’ Compensation	6.35	210.50		216.85
<b>Total Personnel Services – Employee Benefits</b>	<b>\$247.66</b>	<b>\$8,259.69</b>		<b>\$8,507.35</b>
<b>500 <u>Other Purchased Services</u></b>				
563 Tuition To Nonpublic Schools		148,501.40		148,501.40
<b>Total Other Purchased Services</b>		<b>\$148,501.40</b>		<b>\$148,501.40</b>
<b>Total 1400 Other Instructional Programs – Elementary / Secondary</b>	<b>\$847.66</b>	<b>\$176,773.57</b>		<b>\$177,621.23</b>

LEA : 121136503     Palmerton Area SD

Printed 10/26/2018 3:30:53 PM

General Fund (10)

1420 Summer School

	<u>Elementary</u>	<u>Secondary</u>	<u>Federal</u>	<u>Total</u>
<b>100 <u>Personnel Services – Salaries</u></b>				
100 Personnel Services – Salaries		720.00		720.00
<b>Total Personnel Services – Salaries</b>		<b>\$720.00</b>		<b>\$720.00</b>
<b>200 <u>Personnel Services – Employee Benefits</u></b>				
220 Social Security Contributions		55.08		55.08
230 PSERS Retirement Contributions		234.51		234.51
260 Workers’ Compensation		7.72		7.72
<b>Total Personnel Services – Employee Benefits</b>		<b>\$297.31</b>		<b>\$297.31</b>
<b>Total 1420 Summer School</b>		<b>\$1,017.31</b>		<b>\$1,017.31</b>

LEA : 121136503     Palmerton Area SD

Printed 10/26/2018 3:30:53 PM

General Fund (10)

1430 Homebound Instruction	<u>Elementary</u>	<u>Secondary</u>	<u>Federal</u>	<u>Total</u>
<b>100 <u>Personnel Services – Salaries</u></b>				
100 Personnel Services – Salaries	600.00	1,207.50		1,807.50
<b>Total Personnel Services – Salaries</b>	<b>\$600.00</b>	<b>\$1,207.50</b>		<b>\$1,807.50</b>
<b>200 <u>Personnel Services – Employee Benefits</u></b>				
220 Social Security Contributions	45.90	92.38		138.28
230 PSERS Retirement Contributions	195.41	393.28		588.69
260 Workers’ Compensation	6.35	12.76		19.11
<b>Total Personnel Services – Employee Benefits</b>	<b>\$247.66</b>	<b>\$498.42</b>		<b>\$746.08</b>
<b>Total 1430 Homebound Instruction</b>	<b>\$847.66</b>	<b>\$1,705.92</b>		<b>\$2,553.58</b>

LEA : 121136503     Palmerton Area SD

Printed 10/26/2018 3:30:53 PM

General Fund (10)

1440 Alternative Regular Education Programs	<u>Elementary</u>	<u>Secondary</u>	<u>Federal</u>	<u>Total</u>
500 <u>Other Purchased Services</u>				
563 Tuition To Nonpublic Schools		148,501.40		148,501.40
Total Other Purchased Services		\$148,501.40		\$148,501.40
Total 1440 Alternative Regular Education Programs		\$148,501.40		\$148,501.40

LEA : 121136503     Palmerton Area SD

Printed 10/26/2018 3:30:53 PM

General Fund (10)

1442 Alternative Education Programs	<u>Elementary</u>	<u>Secondary</u>	<u>Federal</u>	<u>Total</u>
500 <u>Other Purchased Services</u>				
563 Tuition To Nonpublic Schools		148,501.40		148,501.40
Total Other Purchased Services		\$148,501.40		\$148,501.40
Total 1442 Alternative Education Programs		\$148,501.40		\$148,501.40

LEA : 121136503     Palmerton Area SD

Printed 10/26/2018 3:30:53 PM

General Fund (10)

1490 Additional Other Instructional Programs

	<u>Elementary</u>	<u>Secondary</u>	<u>Federal</u>	<u>Total</u>
<b>100 <u>Personnel Services – Salaries</u></b>				
100 Personnel Services – Salaries		18,084.98		18,084.98
<b>Total Personnel Services – Salaries</b>		<b>\$18,084.98</b>		<b>\$18,084.98</b>
<b>200 <u>Personnel Services – Employee Benefits</u></b>				
220 Social Security Contributions		1,383.67		1,383.67
230 PSERS Retirement Contributions		5,890.27		5,890.27
260 Workers’ Compensation		190.02		190.02
<b>Total Personnel Services – Employee Benefits</b>		<b>\$7,463.96</b>		<b>\$7,463.96</b>
<b>Total 1490 Additional Other Instructional Programs</b>		<b>\$25,548.94</b>		<b>\$25,548.94</b>

LEA : 121136503     Palmerton Area SD

Printed 10/26/2018 3:30:53 PM

General Fund (10)

1500 Nonpublic School Programs

	<u>Elementary</u>	<u>Secondary</u>	<u>Federal</u>	<u>Total</u>
300 <u>Purchased Professional and Technical Services</u>				
329 Professional Educational Services – Other			4,707.00	4,707.00
<b>Total Purchased Professional and Technical Services</b>			<b>\$4,707.00</b>	<b>\$4,707.00</b>
<b>Total 1500 Nonpublic School Programs</b>			<b>\$4,707.00</b>	<b>\$4,707.00</b>

LEA : 121136503     Palmerton Area SD

Printed 10/26/2018 3:30:53 PM

General Fund (10)

1600 Adult Education Programs

Elementary

Secondary

Federal

Total

500 Other Purchased Services

566 Tuition To Institutions of Higher Education and Technical Institutes

197,693.00

<b>Total Other Purchased Services</b>				<b>\$197,693.00</b>
<b>Total 1600 Adult Education Programs</b>				<b>\$197,693.00</b>

LEA : 121136503      Palmerton Area SD

Printed 10/26/2018 3:30:55 PM

General Fund (10)

2000 Support Services		Total
100 <u>Personnel Services – Salaries</u>		
100 Personnel Services – Salaries		2,987,807.66
Total Personnel Services – Salaries		\$2,987,807.66
200 <u>Personnel Services – Employee Benefits</u>		
210 Group Insurance – Contracted Provider		488,494.28
220 Social Security Contributions		224,632.37
230 PSERS Retirement Contributions		935,281.71
240 Tuition Reimbursement		62,977.71
250 Unemployment Compensation		5,556.00
260 Workers' Compensation		31,148.42
280 Other Post-Employment Benefits (OPEB)		31,879.68
Total Personnel Services – Employee Benefits		\$1,779,970.17
300 <u>Purchased Professional and Technical Services</u>		
310 Official / Administrative Services		29,371.04
322 Professional Educational Services – Ius		2,661.00
324 Professional Educational Services – Employee Training and Development Services		4,021.60
329 Professional Educational Services – Other		18,791.57
330 Other Professional Services		237,650.75
340 Technical Services		26,386.60
350 Security / Safety Services		414.00
390 Other Purchased Professional and Technical Services		28,633.23
Total Purchased Professional and Technical Services		\$347,929.79
400 <u>Purchased Property Services</u>		
410 Cleaning Services		33,824.33
420 Utility Services		44,805.51
430 Repairs and Maintenance Services		70,756.49
440 Rentals		21,299.08
460 Extermination Services		2,580.00
Total Purchased Property Services		\$173,265.41
500 <u>Other Purchased Services</u>		
513 Contracted Carriers		997,566.14
516 Student Transportation Services From the IU		353,311.78
520 Insurance – General		7,968.00
523 General Property and Liability Insurance		128,708.36
530 Communications		57,557.01
549 Other Advertising/Public Relations		7,438.53
550 Printing and Binding		11,638.30
580 Travel		7,773.90
595 IU Payments By Withholding		22,173.87
Total Other Purchased Services		\$1,594,135.89
600 <u>Supplies</u>		
610 General Supplies		78,398.91
620 Energy		338,742.08
630 Food		600.37

LEA : 121136503     Palmerton Area SD

Printed 10/26/2018 3:30:55 PM

General Fund (10)

2000 Support Services

Total

600	<u>Supplies</u>	
640	Books and Periodicals	10,697.50
650	Supplies & Fees – Technology Related	31,174.21
Total Supplies		\$459,613.07
700	<u>Property</u>	
752	Capital Equipment – Original and Additional	399.98
756	Capitalized Technology Hardware and Equipment – Original	5,114.10
758	Capitalized Technology Software - Original	47,248.94
766	Capitalized Technology Hardware and Equipment – Replacement	13,738.23
Total Property		\$66,501.25
800	<u>Other Objects</u>	
810	Dues and Fees	23,029.31
Total Other Objects		\$23,029.31
Total 2000 Support Services		\$7,432,252.55

LEA : 121136503     Palmerton Area SD

Printed 10/26/2018 3:30:55 PM

General Fund (10)

2100 Support Services – Students	Elementary	Secondary	Federal	Total
100 <u>Personnel Services – Salaries</u>				
100 Personnel Services – Salaries	171,105.00	291,304.06		462,409.06
<b>Total Personnel Services – Salaries</b>	<b>\$171,105.00</b>	<b>\$291,304.06</b>		<b>\$462,409.06</b>
200 <u>Personnel Services – Employee Benefits</u>				
210 Group Insurance – Contracted Provider	28,020.05	54,775.66		82,795.71
220 Social Security Contributions	12,855.83	21,980.73		34,836.56
230 PSERS Retirement Contributions	54,347.83	93,210.65		147,558.48
260 Workers' Compensation	1,802.15	3,070.89		4,873.04
<b>Total Personnel Services – Employee Benefits</b>	<b>\$97,025.86</b>	<b>\$173,037.93</b>		<b>\$270,063.79</b>
300 <u>Purchased Professional and Technical Services</u>				
324 Professional Educational Services – Employee Training and Development Services	670.00			670.00
329 Professional Educational Services – Other		14,000.01		14,000.01
330 Other Professional Services	24,000.00	24,000.00		48,000.00
340 Technical Services		4,033.00		4,033.00
<b>Total Purchased Professional and Technical Services</b>	<b>\$24,670.00</b>	<b>\$42,033.01</b>		<b>\$66,703.01</b>
400 <u>Purchased Property Services</u>				
440 Rentals		1,660.14		1,660.14
<b>Total Purchased Property Services</b>		<b>\$1,660.14</b>		<b>\$1,660.14</b>
500 <u>Other Purchased Services</u>				
550 Printing and Binding	28.00	2,119.50		2,147.50
580 Travel	743.93	503.69		1,247.62
<b>Total Other Purchased Services</b>	<b>\$771.93</b>	<b>\$2,623.19</b>		<b>\$3,395.12</b>
600 <u>Supplies</u>				
610 General Supplies	1,303.38	1,623.16		2,926.54
630 Food		76.05		76.05
640 Books and Periodicals	119.88	15.04		134.92
650 Supplies & Fees – Technology Related		3,586.00		3,586.00
<b>Total Supplies</b>	<b>\$1,423.26</b>	<b>\$5,300.25</b>		<b>\$6,723.51</b>
800 <u>Other Objects</u>				
810 Dues and Fees	249.00	100.00		349.00
<b>Total Other Objects</b>	<b>\$249.00</b>	<b>\$100.00</b>		<b>\$349.00</b>
<b>Total 2100 Support Services – Students</b>	<b>\$295,245.05</b>	<b>\$516,058.58</b>		<b>\$811,303.63</b>

LEA : 121136503     Palmerton Area SD

Printed 10/26/2018 3:30:55 PM

General Fund (10)

2120 Guidance Services	Elementary	Secondary	Federal	Total
100 <u>Personnel Services – Salaries</u>				
100 Personnel Services – Salaries	137,270.00	257,469.06		394,739.06
<b>Total Personnel Services – Salaries</b>	<b>\$137,270.00</b>	<b>\$257,469.06</b>		<b>\$394,739.06</b>
200 <u>Personnel Services – Employee Benefits</u>				
210 Group Insurance – Contracted Provider	18,508.06	45,263.67		63,771.73
220 Social Security Contributions	10,319.01	19,443.92		29,762.93
230 PSERS Retirement Contributions	43,327.76	82,190.59		125,518.35
260 Workers' Compensation	1,443.24	2,711.98		4,155.22
<b>Total Personnel Services – Employee Benefits</b>	<b>\$73,598.07</b>	<b>\$149,610.16</b>		<b>\$223,208.23</b>
300 <u>Purchased Professional and Technical Services</u>				
324 Professional Educational Services – Employee Training and Development Services	670.00			670.00
329 Professional Educational Services – Other		14,000.01		14,000.01
340 Technical Services		4,033.00		4,033.00
<b>Total Purchased Professional and Technical Services</b>	<b>\$670.00</b>	<b>\$18,033.01</b>		<b>\$18,703.01</b>
400 <u>Purchased Property Services</u>				
440 Rentals		1,660.14		1,660.14
<b>Total Purchased Property Services</b>		<b>\$1,660.14</b>		<b>\$1,660.14</b>
500 <u>Other Purchased Services</u>				
550 Printing and Binding	28.00	2,119.50		2,147.50
580 Travel	434.74	194.51		629.25
<b>Total Other Purchased Services</b>	<b>\$462.74</b>	<b>\$2,314.01</b>		<b>\$2,776.75</b>
600 <u>Supplies</u>				
610 General Supplies	825.98	1,145.76		1,971.74
630 Food		76.05		76.05
640 Books and Periodicals	104.84			104.84
650 Supplies & Fees – Technology Related		3,586.00		3,586.00
<b>Total Supplies</b>	<b>\$930.82</b>	<b>\$4,807.81</b>		<b>\$5,738.63</b>
800 <u>Other Objects</u>				
810 Dues and Fees	249.00	100.00		349.00
<b>Total Other Objects</b>	<b>\$249.00</b>	<b>\$100.00</b>		<b>\$349.00</b>
<b>Total 2120 Guidance Services</b>	<b>\$213,180.63</b>	<b>\$433,994.19</b>		<b>\$647,174.82</b>

LEA : 121136503     Palmerton Area SD

Printed 10/26/2018 3:30:55 PM

General Fund (10)				
2140 Psychological Services	<u>Elementary</u>	<u>Secondary</u>	<u>Federal</u>	<u>Total</u>
100 <u>Personnel Services – Salaries</u>				
100 Personnel Services – Salaries	33,835.00	33,835.00		67,670.00
<b>Total Personnel Services – Salaries</b>	<b>\$33,835.00</b>	<b>\$33,835.00</b>		<b>\$67,670.00</b>
200 <u>Personnel Services – Employee Benefits</u>				
210 Group Insurance – Contracted Provider	9,511.99	9,511.99		19,023.98
220 Social Security Contributions	2,536.82	2,536.81		5,073.63
230 PSERS Retirement Contributions	11,020.07	11,020.06		22,040.13
260 Workers' Compensation	358.91	358.91		717.82
<b>Total Personnel Services – Employee Benefits</b>	<b>\$23,427.79</b>	<b>\$23,427.77</b>		<b>\$46,855.56</b>
300 <u>Purchased Professional and Technical Services</u>				
330 Other Professional Services	24,000.00	24,000.00		48,000.00
<b>Total Purchased Professional and Technical Services</b>	<b>\$24,000.00</b>	<b>\$24,000.00</b>		<b>\$48,000.00</b>
500 <u>Other Purchased Services</u>				
580 Travel	309.19	309.18		618.37
<b>Total Other Purchased Services</b>	<b>\$309.19</b>	<b>\$309.18</b>		<b>\$618.37</b>
600 <u>Supplies</u>				
610 General Supplies	477.40	477.40		954.80
640 Books and Periodicals	15.04	15.04		30.08
<b>Total Supplies</b>	<b>\$492.44</b>	<b>\$492.44</b>		<b>\$984.88</b>
<b>Total 2140 Psychological Services</b>	<b>\$82,064.42</b>	<b>\$82,064.39</b>		<b>\$164,128.81</b>

LEA : 121136503     Palmerton Area SD

Printed 10/26/2018 3:30:55 PM

General Fund (10)

<b>2200 Support Services – Instructional Staff</b>	<b><u>Elementary</u></b>	<b><u>Secondary</u></b>	<b><u>Federal</u></b>	<b><u>Total</u></b>
<b>100 <u>Personnel Services – Salaries</u></b>				
100 Personnel Services – Salaries	187,602.02	105,040.52	2,772.72	295,415.26
<b>Total Personnel Services – Salaries</b>	<b>\$187,602.02</b>	<b>\$105,040.52</b>	<b>\$2,772.72</b>	<b>\$295,415.26</b>
<b>200 <u>Personnel Services – Employee Benefits</u></b>				
210 Group Insurance – Contracted Provider	24,042.99	7,522.13		31,565.12
220 Social Security Contributions	13,950.05	7,998.83	211.73	22,160.61
230 PSERS Retirement Contributions	60,466.48	32,324.29	903.07	93,693.84
240 Tuition Reimbursement	36,772.00	24,670.71		61,442.71
260 Workers' Compensation	1,981.72	1,109.57	29.33	3,120.62
<b>Total Personnel Services – Employee Benefits</b>	<b>\$137,213.24</b>	<b>\$73,625.53</b>	<b>\$1,144.13</b>	<b>\$211,982.90</b>
<b>300 <u>Purchased Professional and Technical Services</u></b>				
322 Professional Educational Services – lus	1,330.50	1,330.50		2,661.00
324 Professional Educational Services – Employee Training and Development Services	327.50	327.50		655.00
329 Professional Educational Services – Other	2,395.78	2,395.78		4,791.56
<b>Total Purchased Professional and Technical Services</b>	<b>\$4,053.78</b>	<b>\$4,053.78</b>		<b>\$8,107.56</b>
<b>400 <u>Purchased Property Services</u></b>				
440 Rentals	1,044.70	1,044.70		2,089.40
<b>Total Purchased Property Services</b>	<b>\$1,044.70</b>	<b>\$1,044.70</b>		<b>\$2,089.40</b>
<b>500 <u>Other Purchased Services</u></b>				
530 Communications	510.30	510.29		1,020.59
580 Travel	701.85	701.84		1,403.69
<b>Total Other Purchased Services</b>	<b>\$1,212.15</b>	<b>\$1,212.13</b>		<b>\$2,424.28</b>
<b>600 <u>Supplies</u></b>				
610 General Supplies	5,236.32	2,557.36		7,793.68
630 Food	29.29	29.28		58.57
640 Books and Periodicals	6,894.13	3,435.95		10,330.08
650 Supplies & Fees – Technology Related	4,705.50	10,681.46		15,386.96
<b>Total Supplies</b>	<b>\$16,865.24</b>	<b>\$16,704.05</b>		<b>\$33,569.29</b>
<b>700 <u>Property</u></b>				
752 Capital Equipment – Original and Additional	399.98			399.98
756 Capitalized Technology Hardware and Equipment – Original	659.99	659.99		1,319.98
<b>Total Property</b>	<b>\$1,059.97</b>	<b>\$659.99</b>		<b>\$1,719.96</b>
<b>800 <u>Other Objects</u></b>				
810 Dues and Fees	392.00	687.00		1,079.00
<b>Total Other Objects</b>	<b>\$392.00</b>	<b>\$687.00</b>		<b>\$1,079.00</b>
<b>Total 2200 Support Services – Instructional Staff</b>	<b>\$349,443.10</b>	<b>\$203,027.70</b>	<b>\$3,916.85</b>	<b>\$556,387.65</b>

LEA : 121136503     Palmerton Area SD

Printed 10/26/2018 3:30:55 PM

General Fund (10)

2220 Technology Support Services	Elementary	Secondary	Federal	Total
600 <u>Supplies</u>				
610 General Supplies	2,656.32	167.25		2,823.57
<b>Total Supplies</b>	<b>\$2,656.32</b>	<b>\$167.25</b>		<b>\$2,823.57</b>
700 <u>Property</u>				
752 Capital Equipment – Original and Additional	399.98			399.98
<b>Total Property</b>	<b>\$399.98</b>			<b>\$399.98</b>
<b>Total 2220 Technology Support Services</b>	<b>\$3,056.30</b>	<b>\$167.25</b>		<b>\$3,223.55</b>

LEA : 121136503     Palmerton Area SD

Printed 10/26/2018 3:30:55 PM

General Fund (10)				
2250 School Library Services	<u>Elementary</u>	<u>Secondary</u>	<u>Federal</u>	<u>Total</u>
100 <u>Personnel Services – Salaries</u>				
100 Personnel Services – Salaries	126,290.03	43,728.54		170,018.57
<b>Total Personnel Services – Salaries</b>	<b>\$126,290.03</b>	<b>\$43,728.54</b>		<b>\$170,018.57</b>
200 <u>Personnel Services – Employee Benefits</u>				
210 Group Insurance – Contracted Provider	16,612.06	91.20		16,703.26
220 Social Security Contributions	9,296.51	3,345.31		12,641.82
230 PSERS Retirement Contributions	41,052.51	12,910.33		53,962.84
260 Workers' Compensation	1,331.83	459.69		1,791.52
<b>Total Personnel Services – Employee Benefits</b>	<b>\$68,292.91</b>	<b>\$16,806.53</b>		<b>\$85,099.44</b>
600 <u>Supplies</u>				
610 General Supplies	1,177.33	987.44		2,164.77
640 Books and Periodicals	6,784.50	3,326.32		10,110.82
650 Supplies & Fees – Technology Related	2,230.00	8,205.96		10,435.96
<b>Total Supplies</b>	<b>\$10,191.83</b>	<b>\$12,519.72</b>		<b>\$22,711.55</b>
800 <u>Other Objects</u>				
810 Dues and Fees	60.00	355.00		415.00
<b>Total Other Objects</b>	<b>\$60.00</b>	<b>\$355.00</b>		<b>\$415.00</b>
<b>Total 2250 School Library Services</b>	<b>\$204,834.77</b>	<b>\$73,409.79</b>		<b>\$278,244.56</b>

LEA : 121136503     Palmerton Area SD

Printed 10/26/2018 3:30:55 PM

General Fund (10)

2260 Instruction and Curriculum Development Services	Elementary	Secondary	Federal	Total
<b>100 Personnel Services – Salaries</b>				
100 Personnel Services – Salaries	60,516.99	60,516.98		121,033.97
<b>Total Personnel Services – Salaries</b>	<b>\$60,516.99</b>	<b>\$60,516.98</b>		<b>\$121,033.97</b>
<b>200 Personnel Services – Employee Benefits</b>				
210 Group Insurance – Contracted Provider	7,430.93	7,430.93		14,861.86
220 Social Security Contributions	4,592.84	4,592.83		9,185.67
230 PSERS Retirement Contributions	19,155.03	19,155.03		38,310.06
260 Workers' Compensation	641.49	641.48		1,282.97
<b>Total Personnel Services – Employee Benefits</b>	<b>\$31,820.29</b>	<b>\$31,820.27</b>		<b>\$63,640.56</b>
<b>400 Purchased Property Services</b>				
440 Rentals	1,044.70	1,044.70		2,089.40
<b>Total Purchased Property Services</b>	<b>\$1,044.70</b>	<b>\$1,044.70</b>		<b>\$2,089.40</b>
<b>500 Other Purchased Services</b>				
530 Communications	510.30	510.29		1,020.59
<b>Total Other Purchased Services</b>	<b>\$510.30</b>	<b>\$510.29</b>		<b>\$1,020.59</b>
<b>600 Supplies</b>				
610 General Supplies	1,285.00	1,285.00		2,570.00
640 Books and Periodicals	109.63	109.63		219.26
<b>Total Supplies</b>	<b>\$1,394.63</b>	<b>\$1,394.63</b>		<b>\$2,789.26</b>
<b>700 Property</b>				
756 Capitalized Technology Hardware and Equipment – Original	659.99	659.99		1,319.98
<b>Total Property</b>	<b>\$659.99</b>	<b>\$659.99</b>		<b>\$1,319.98</b>
<b>800 Other Objects</b>				
810 Dues and Fees	332.00	332.00		664.00
<b>Total Other Objects</b>	<b>\$332.00</b>	<b>\$332.00</b>		<b>\$664.00</b>
<b>Total 2260 Instruction and Curriculum Development Services</b>	<b>\$96,278.90</b>	<b>\$96,278.86</b>		<b>\$192,557.76</b>

LEA : 121136503     Palmerton Area SD

Printed 10/26/2018 3:30:55 PM

General Fund (10)

2270 Instructional Staff Professional Development Services	Elementary	Secondary	Federal	Total
100 <u>Personnel Services – Salaries</u>				
100 Personnel Services – Salaries	795.00	795.00	2,772.72	4,362.72
<b>Total Personnel Services – Salaries</b>	<b>\$795.00</b>	<b>\$795.00</b>	<b>\$2,772.72</b>	<b>\$4,362.72</b>
200 <u>Personnel Services – Employee Benefits</u>				
220 Social Security Contributions	60.70	60.69	211.73	333.12
230 PSERS Retirement Contributions	258.94	258.93	903.07	1,420.94
240 Tuition Reimbursement	36,772.00	24,670.71		61,442.71
260 Workers' Compensation	8.40	8.40	29.33	46.13
<b>Total Personnel Services – Employee Benefits</b>	<b>\$37,100.04</b>	<b>\$24,998.73</b>	<b>\$1,144.13</b>	<b>\$63,242.90</b>
300 <u>Purchased Professional and Technical Services</u>				
322 Professional Educational Services – Ius	1,330.50	1,330.50		2,661.00
324 Professional Educational Services – Employee Training and Development Services	327.50	327.50		655.00
329 Professional Educational Services – Other	2,395.78	2,395.78		4,791.56
<b>Total Purchased Professional and Technical Services</b>	<b>\$4,053.78</b>	<b>\$4,053.78</b>		<b>\$8,107.56</b>
500 <u>Other Purchased Services</u>				
580 Travel	701.85	701.84		1,403.69
<b>Total Other Purchased Services</b>	<b>\$701.85</b>	<b>\$701.84</b>		<b>\$1,403.69</b>
600 <u>Supplies</u>				
610 General Supplies	117.67	117.67		235.34
630 Food	29.29	29.28		58.57
650 Supplies & Fees – Technology Related	2,475.50	2,475.50		4,951.00
<b>Total Supplies</b>	<b>\$2,622.46</b>	<b>\$2,622.45</b>		<b>\$5,244.91</b>
<b>Total 2270 Instructional Staff Professional Development Services</b>	<b>\$45,273.13</b>	<b>\$33,171.80</b>	<b>\$3,916.85</b>	<b>\$82,361.78</b>

LEA : 121136503     Palmerton Area SD

Printed 10/26/2018 3:30:55 PM

<b>General Fund (10)</b>				
<b>2300 Support Services – Administration</b>	<b><u>Elementary</u></b>	<b><u>Secondary</u></b>	<b><u>Federal</u></b>	<b><u>Total</u></b>
<b>100 <u>Personnel Services – Salaries</u></b>				
100 Personnel Services – Salaries	300,360.90	249,812.52		767,160.08
<b>Total Personnel Services – Salaries</b>	<b>\$300,360.90</b>	<b>\$249,812.52</b>		<b>\$767,160.08</b>
<b>200 <u>Personnel Services – Employee Benefits</u></b>				
210 Group Insurance – Contracted Provider	11,958.43			46,136.57
220 Social Security Contributions	22,641.87	18,635.59		57,439.14
230 PSERS Retirement Contributions	96,097.75	77,638.21		228,029.03
260 Workers' Compensation	3,184.39	2,650.17		7,652.25
280 Other Post-Employment Benefits (OPEB)				3,584.56
<b>Total Personnel Services – Employee Benefits</b>	<b>\$133,882.44</b>	<b>\$98,923.97</b>		<b>\$342,841.55</b>
<b>300 <u>Purchased Professional and Technical Services</u></b>				
310 Official / Administrative Services				28,457.24
324 Professional Educational Services – Employee Training and Development Services				1,476.35
330 Other Professional Services		28,125.00	2,000.00	127,787.20
350 Security / Safety Services				414.00
<b>Total Purchased Professional and Technical Services</b>		<b>\$28,125.00</b>	<b>\$2,000.00</b>	<b>\$158,134.79</b>
<b>400 <u>Purchased Property Services</u></b>				
440 Rentals	6,828.96	4,941.48		15,109.90
<b>Total Purchased Property Services</b>	<b>\$6,828.96</b>	<b>\$4,941.48</b>		<b>\$15,109.90</b>
<b>500 <u>Other Purchased Services</u></b>				
520 Insurance – General				7,968.00
530 Communications	19,175.89	17,410.68		44,092.87
549 Other Advertising/Public Relations				7,438.53
550 Printing and Binding	2,693.90	3,447.34		8,982.11
580 Travel				4,362.46
<b>Total Other Purchased Services</b>	<b>\$21,869.79</b>	<b>\$20,858.02</b>		<b>\$72,843.97</b>
<b>600 <u>Supplies</u></b>				
610 General Supplies	3,877.55	2,389.27		12,317.25
630 Food				416.20
640 Books and Periodicals	39.00			39.00
650 Supplies & Fees – Technology Related	350.00			10,075.00
<b>Total Supplies</b>	<b>\$4,266.55</b>	<b>\$2,389.27</b>		<b>\$22,847.45</b>
<b>800 <u>Other Objects</u></b>				
810 Dues and Fees	1,348.00	1,279.00		16,725.13
<b>Total Other Objects</b>	<b>\$1,348.00</b>	<b>\$1,279.00</b>		<b>\$16,725.13</b>
<b>Total 2300 Support Services – Administration</b>	<b>\$468,556.64</b>	<b>\$406,329.26</b>	<b>\$2,000.00</b>	<b>\$1,395,662.87</b>

LEA : 121136503     Palmerton Area SD

Printed 10/26/2018 3:30:55 PM

General Fund (10)				
2310 Board Services				
	<u>Elementary</u>	<u>Secondary</u>	<u>Federal</u>	<u>Total</u>
100 <u>Personnel Services – Salaries</u>				
100 Personnel Services – Salaries				1,500.00
Total Personnel Services – Salaries				\$1,500.00
200 <u>Personnel Services – Employee Benefits</u>				
220 Social Security Contributions				111.51
230 PSERS Retirement Contributions				488.49
260 Workers’ Compensation				15.92
Total Personnel Services – Employee Benefits				\$615.92
300 <u>Purchased Professional and Technical Services</u>				
330 Other Professional Services			2,000.00	3,711.43
Total Purchased Professional and Technical Services			\$2,000.00	\$3,711.43
500 <u>Other Purchased Services</u>				
520 Insurance – General				484.00
549 Other Advertising/Public Relations				7,438.53
580 Travel				491.34
Total Other Purchased Services				\$8,413.87
600 <u>Supplies</u>				
610 General Supplies				125.10
630 Food				416.20
Total Supplies				\$541.30
800 <u>Other Objects</u>				
810 Dues and Fees				12,433.13
Total Other Objects				\$12,433.13
Total 2310 Board Services			\$2,000.00	\$27,215.65

LEA : 121136503     Palmerton Area SD

Printed 10/26/2018 3:30:55 PM

General Fund (10)				
2320 Board Treasurer Services	<u>Elementary</u>	<u>Secondary</u>	<u>Federal</u>	<u>Total</u>
600 <u>Supplies</u>				
610 General Supplies				400.00
Total Supplies				\$400.00
Total 2320 Board Treasurer Services				\$400.00

LEA : 121136503     Palmerton Area SD

Printed 10/26/2018 3:30:55 PM

General Fund (10)				
2330 Tax Assessment and Collection Services	<u>Elementary</u>	<u>Secondary</u>	<u>Federal</u>	<u>Total</u>
100 <u>Personnel Services – Salaries</u>				
100 Personnel Services – Salaries				45,482.30
Total Personnel Services – Salaries				\$45,482.30
200 <u>Personnel Services – Employee Benefits</u>				
220 Social Security Contributions				3,479.29
Total Personnel Services – Employee Benefits				\$3,479.29
300 <u>Purchased Professional and Technical Services</u>				
310 Official / Administrative Services				28,457.24
Total Purchased Professional and Technical Services				\$28,457.24
500 <u>Other Purchased Services</u>				
520 Insurance – General				7,484.00
530 Communications				7,506.30
550 Printing and Binding				2,720.37
Total Other Purchased Services				\$17,710.67
600 <u>Supplies</u>				
650 Supplies & Fees – Technology Related				9,725.00
Total Supplies				\$9,725.00
Total 2330 Tax Assessment and Collection Services				\$104,854.50

LEA : 121136503     Palmerton Area SD

Printed 10/26/2018 3:30:55 PM

General Fund (10)

2340 Staff Relations and Negotiations Services

<u>Elementary</u>	<u>Secondary</u>	<u>Federal</u>	<u>Total</u>
-------------------	------------------	----------------	--------------

300 Purchased Professional and Technical Services

330 Other Professional Services			72,441.77
---------------------------------	--	--	-----------

<b>Total Purchased Professional and Technical Services</b>			<b>\$72,441.77</b>
<b>Total 2340 Staff Relations and Negotiations Services</b>			<b>\$72,441.77</b>

LEA : 121136503     Palmerton Area SD

Printed 10/26/2018 3:30:55 PM

General Fund (10)

2350 Legal and Accounting Services	<u>Elementary</u>	<u>Secondary</u>	<u>Federal</u>	<u>Total</u>
300 <u>Purchased Professional and Technical Services</u>				
330 Other Professional Services				23,509.00
<b>Total Purchased Professional and Technical Services</b>				<b>\$23,509.00</b>
<b>Total 2350 Legal and Accounting Services</b>				<b>\$23,509.00</b>

LEA : 121136503     Palmerton Area SD

Printed 10/26/2018 3:30:55 PM

General Fund (10)				
2360 Office of the Superintendent / Executive Director Services	<u>Elementary</u>	<u>Secondary</u>	<u>Federal</u>	<u>Total</u>
100 <u>Personnel Services – Salaries</u>				
100 Personnel Services – Salaries				170,004.36
<b>Total Personnel Services – Salaries</b>				<b>\$170,004.36</b>
200 <u>Personnel Services – Employee Benefits</u>				
210 Group Insurance – Contracted Provider				34,178.14
220 Social Security Contributions				12,570.88
230 PSERS Retirement Contributions				53,804.58
260 Workers' Compensation				1,801.77
280 Other Post-Employment Benefits (OPEB)				3,584.56
<b>Total Personnel Services – Employee Benefits</b>				<b>\$105,939.93</b>
300 <u>Purchased Professional and Technical Services</u>				
324 Professional Educational Services – Employee Training and Development Services				1,476.35
<b>Total Purchased Professional and Technical Services</b>				<b>\$1,476.35</b>
400 <u>Purchased Property Services</u>				
440 Rentals				2,089.46
<b>Total Purchased Property Services</b>				<b>\$2,089.46</b>
500 <u>Other Purchased Services</u>				
530 Communications	1,824.53	1,824.53		3,649.06
550 Printing and Binding				120.50
580 Travel				3,871.12
<b>Total Other Purchased Services</b>	<b>\$1,824.53</b>	<b>\$1,824.53</b>		<b>\$7,640.68</b>
600 <u>Supplies</u>				
610 General Supplies				406.57
<b>Total Supplies</b>				<b>\$406.57</b>
800 <u>Other Objects</u>				
810 Dues and Fees				1,665.00
<b>Total Other Objects</b>				<b>\$1,665.00</b>
<b>Total 2360 Office of the Superintendent / Executive Director Services</b>	<b>\$1,824.53</b>	<b>\$1,824.53</b>		<b>\$289,222.35</b>

LEA : 121136503     Palmerton Area SD

Printed 10/26/2018 3:30:55 PM

General Fund (10)

2380 Office of the Principal Services	Elementary	Secondary	Federal	Total
100 <u>Personnel Services – Salaries</u>				
100 Personnel Services – Salaries	300,360.90	249,812.52		550,173.42
<b>Total Personnel Services – Salaries</b>	<b>\$300,360.90</b>	<b>\$249,812.52</b>		<b>\$550,173.42</b>
200 <u>Personnel Services – Employee Benefits</u>				
210 Group Insurance – Contracted Provider	11,958.43			11,958.43
220 Social Security Contributions	22,641.87	18,635.59		41,277.46
230 PSERS Retirement Contributions	96,097.75	77,638.21		173,735.96
260 Workers' Compensation	3,184.39	2,650.17		5,834.56
<b>Total Personnel Services – Employee Benefits</b>	<b>\$133,882.44</b>	<b>\$98,923.97</b>		<b>\$232,806.41</b>
300 <u>Purchased Professional and Technical Services</u>				
330 Other Professional Services		28,125.00		28,125.00
<b>Total Purchased Professional and Technical Services</b>		<b>\$28,125.00</b>		<b>\$28,125.00</b>
400 <u>Purchased Property Services</u>				
440 Rentals	6,828.96	4,941.48		11,770.44
<b>Total Purchased Property Services</b>	<b>\$6,828.96</b>	<b>\$4,941.48</b>		<b>\$11,770.44</b>
500 <u>Other Purchased Services</u>				
530 Communications	17,351.36	15,586.15		32,937.51
550 Printing and Binding	2,693.90	3,447.34		6,141.24
<b>Total Other Purchased Services</b>	<b>\$20,045.26</b>	<b>\$19,033.49</b>		<b>\$39,078.75</b>
600 <u>Supplies</u>				
610 General Supplies	3,877.55	2,389.27		6,266.82
640 Books and Periodicals	39.00			39.00
650 Supplies & Fees – Technology Related	350.00			350.00
<b>Total Supplies</b>	<b>\$4,266.55</b>	<b>\$2,389.27</b>		<b>\$6,655.82</b>
800 <u>Other Objects</u>				
810 Dues and Fees	1,348.00	1,279.00		2,627.00
<b>Total Other Objects</b>	<b>\$1,348.00</b>	<b>\$1,279.00</b>		<b>\$2,627.00</b>
<b>Total 2380 Office of the Principal Services</b>	<b>\$466,732.11</b>	<b>\$404,504.73</b>		<b>\$871,236.84</b>

LEA : 121136503     Palmerton Area SD

Printed 10/26/2018 3:30:55 PM

General Fund (10)				
2390 Other Administration Services	<u>Elementary</u>	<u>Secondary</u>	<u>Federal</u>	<u>Total</u>
300 <u>Purchased Professional and Technical Services</u>				
350 Security / Safety Services				414.00
Total Purchased Professional and Technical Services				\$414.00
400 <u>Purchased Property Services</u>				
440 Rentals				1,250.00
Total Purchased Property Services				\$1,250.00
600 <u>Supplies</u>				
610 General Supplies				5,118.76
Total Supplies				\$5,118.76
Total 2390 Other Administration Services				\$6,782.76

LEA : 121136503     Palmerton Area SD

Printed 10/26/2018 3:30:55 PM

General Fund (10)				
2400 Support Services – Pupil Health	<u>Elementary</u>	<u>Secondary</u>	<u>Federal</u>	<u>Total</u>
100 <u>Personnel Services – Salaries</u>				
100 Personnel Services – Salaries				158,090.54
Total Personnel Services – Salaries				\$158,090.54
200 <u>Personnel Services – Employee Benefits</u>				
210 Group Insurance – Contracted Provider				36,152.12
220 Social Security Contributions				11,873.34
230 PSERS Retirement Contributions				51,401.81
260 Workers' Compensation				1,661.87
Total Personnel Services – Employee Benefits				\$101,089.14
300 <u>Purchased Professional and Technical Services</u>				
324 Professional Educational Services – Employee Training and Development Services				120.00
330 Other Professional Services				28,710.75
Total Purchased Professional and Technical Services				\$28,830.75
400 <u>Purchased Property Services</u>				
430 Repairs and Maintenance Services				1,640.00
Total Purchased Property Services				\$1,640.00
600 <u>Supplies</u>				
610 General Supplies				3,887.08
640 Books and Periodicals				193.50
Total Supplies				\$4,080.58
700 <u>Property</u>				
766 Capitalized Technology Hardware and Equipment – Replacement				1,694.99
Total Property				\$1,694.99
800 <u>Other Objects</u>				
810 Dues and Fees				130.00
Total Other Objects				\$130.00
Total 2400 Support Services – Pupil Health				\$295,556.00

LEA : 121136503     Palmerton Area SD

Printed 10/26/2018 3:30:55 PM

General Fund (10)

2430 Dental Services

<u>Elementary</u>	<u>Secondary</u>	<u>Federal</u>	<u>Total</u>
-------------------	------------------	----------------	--------------

300 Purchased Professional and Technical Services

330 Other Professional Services			1,500.00
---------------------------------	--	--	----------

<b>Total Purchased Professional and Technical Services</b>			<b>\$1,500.00</b>
--	--	--	-------------------

<b>Total 2430 Dental Services</b>			<b>\$1,500.00</b>
-----------------------------------	--	--	-------------------

LEA : 121136503     Palmerton Area SD

Printed 10/26/2018 3:30:55 PM

General Fund (10)				
2440 Nursing Services				
	<u>Elementary</u>	<u>Secondary</u>	<u>Federal</u>	<u>Total</u>
100 <u>Personnel Services – Salaries</u>				
100 Personnel Services – Salaries				158,090.54
Total Personnel Services – Salaries				\$158,090.54
200 <u>Personnel Services – Employee Benefits</u>				
210 Group Insurance – Contracted Provider				36,152.12
220 Social Security Contributions				11,873.34
230 PSERS Retirement Contributions				51,401.81
260 Workers' Compensation				1,661.87
Total Personnel Services – Employee Benefits				\$101,089.14
300 <u>Purchased Professional and Technical Services</u>				
324 Professional Educational Services – Employee Training and Development Services				120.00
330 Other Professional Services				27,210.75
Total Purchased Professional and Technical Services				\$27,330.75
400 <u>Purchased Property Services</u>				
430 Repairs and Maintenance Services				1,640.00
Total Purchased Property Services				\$1,640.00
600 <u>Supplies</u>				
610 General Supplies				3,887.08
640 Books and Periodicals				193.50
Total Supplies				\$4,080.58
700 <u>Property</u>				
766 Capitalized Technology Hardware and Equipment – Replacement				1,694.99
Total Property				\$1,694.99
800 <u>Other Objects</u>				
810 Dues and Fees				130.00
Total Other Objects				\$130.00
Total 2440 Nursing Services				\$294,056.00

LEA : 121136503     Palmerton Area SD

Printed 10/26/2018 3:30:55 PM

General Fund (10)				
2500 Support Services – Business	<u>Elementary</u>	<u>Secondary</u>	<u>Federal</u>	<u>Total</u>
100 <u>Personnel Services – Salaries</u>				
100 Personnel Services – Salaries				254,751.70
Total Personnel Services – Salaries				\$254,751.70
200 <u>Personnel Services – Employee Benefits</u>				
210 Group Insurance – Contracted Provider				70,644.98
220 Social Security Contributions				18,995.42
230 PSERS Retirement Contributions				81,100.57
260 Workers' Compensation				2,702.14
Total Personnel Services – Employee Benefits				\$173,443.11
300 <u>Purchased Professional and Technical Services</u>				
310 Official / Administrative Services				913.80
324 Professional Educational Services – Employee Training and Development Services				900.25
330 Other Professional Services				29,227.80
Total Purchased Professional and Technical Services				\$31,041.85
400 <u>Purchased Property Services</u>				
440 Rentals				2,089.39
Total Purchased Property Services				\$2,089.39
500 <u>Other Purchased Services</u>				
530 Communications				6,685.76
550 Printing and Binding				348.19
580 Travel				412.87
Total Other Purchased Services				\$7,446.82
600 <u>Supplies</u>				
610 General Supplies				614.74
Total Supplies				\$614.74
800 <u>Other Objects</u>				
810 Dues and Fees				2,893.18
Total Other Objects				\$2,893.18
Total 2500 Support Services – Business				\$472,280.79

LEA : 121136503     Palmerton Area SD

Printed 10/26/2018 3:30:55 PM

General Fund (10)				
2510 Fiscal Services				
	<u>Elementary</u>	<u>Secondary</u>	<u>Federal</u>	<u>Total</u>
100 <u>Personnel Services – Salaries</u>				
100 Personnel Services – Salaries				254,751.70
Total Personnel Services – Salaries				\$254,751.70
200 <u>Personnel Services – Employee Benefits</u>				
210 Group Insurance – Contracted Provider				70,644.98
220 Social Security Contributions				18,995.42
230 PSERS Retirement Contributions				81,100.57
260 Workers' Compensation				2,702.14
Total Personnel Services – Employee Benefits				\$173,443.11
300 <u>Purchased Professional and Technical Services</u>				
310 Official / Administrative Services				913.80
324 Professional Educational Services – Employee Training and Development Services				900.25
330 Other Professional Services				29,227.80
Total Purchased Professional and Technical Services				\$31,041.85
400 <u>Purchased Property Services</u>				
440 Rentals				2,089.39
Total Purchased Property Services				\$2,089.39
500 <u>Other Purchased Services</u>				
530 Communications				6,685.76
550 Printing and Binding				348.19
580 Travel				412.87
Total Other Purchased Services				\$7,446.82
600 <u>Supplies</u>				
610 General Supplies				614.74
Total Supplies				\$614.74
800 <u>Other Objects</u>				
810 Dues and Fees				2,893.18
Total Other Objects				\$2,893.18
Total 2510 Fiscal Services				\$472,280.79

LEA : 121136503     Palmerton Area SD

Printed 10/26/2018 3:30:55 PM

General Fund (10)				
2511 Supervision of Fiscal Services - Head of Component	<u>Elementary</u>	<u>Secondary</u>	<u>Federal</u>	<u>Total</u>
100 <u>Personnel Services – Salaries</u>				
100 Personnel Services – Salaries				254,751.70
<b>Total Personnel Services – Salaries</b>				<b>\$254,751.70</b>
200 <u>Personnel Services – Employee Benefits</u>				
210 Group Insurance – Contracted Provider				70,644.98
220 Social Security Contributions				18,995.42
230 PSERS Retirement Contributions				81,100.57
260 Workers' Compensation				2,702.14
<b>Total Personnel Services – Employee Benefits</b>				<b>\$173,443.11</b>
300 <u>Purchased Professional and Technical Services</u>				
310 Official / Administrative Services				913.80
324 Professional Educational Services – Employee Training and Development Services				900.25
330 Other Professional Services				29,227.80
<b>Total Purchased Professional and Technical Services</b>				<b>\$31,041.85</b>
400 <u>Purchased Property Services</u>				
440 Rentals				2,089.39
<b>Total Purchased Property Services</b>				<b>\$2,089.39</b>
500 <u>Other Purchased Services</u>				
530 Communications				6,685.76
550 Printing and Binding				348.19
580 Travel				412.87
<b>Total Other Purchased Services</b>				<b>\$7,446.82</b>
600 <u>Supplies</u>				
610 General Supplies				614.74
<b>Total Supplies</b>				<b>\$614.74</b>
800 <u>Other Objects</u>				
810 Dues and Fees				2,893.18
<b>Total Other Objects</b>				<b>\$2,893.18</b>
<b>Total 2511 Supervision of Fiscal Services - Head of Component</b>				<b>\$472,280.79</b>

LEA : 121136503     Palmerton Area SD

Printed 10/26/2018 3:30:55 PM

<b>General Fund (10)</b>				
<b>2600 Operation and Maintenance of Plant Services</b>	<b><u>Elementary</u></b>	<b><u>Secondary</u></b>	<b><u>Federal</u></b>	<b><u>Total</u></b>
<b>100 <u>Personnel Services – Salaries</u></b>				
100 Personnel Services – Salaries				830,009.44
<b>Total Personnel Services – Salaries</b>				<b>\$830,009.44</b>
<b>200 <u>Personnel Services – Employee Benefits</u></b>				
210 Group Insurance – Contracted Provider				156,407.89
220 Social Security Contributions				62,783.78
230 PSERS Retirement Contributions				262,640.89
250 Unemployment Compensation				5,556.00
260 Workers' Compensation				8,805.29
280 Other Post-Employment Benefits (OPEB)				28,295.12
<b>Total Personnel Services – Employee Benefits</b>				<b>\$524,488.97</b>
<b>300 <u>Purchased Professional and Technical Services</u></b>				
324 Professional Educational Services – Employee Training and Development Services				200.00
390 Other Purchased Professional and Technical Services				28,633.23
<b>Total Purchased Professional and Technical Services</b>				<b>\$28,833.23</b>
<b>400 <u>Purchased Property Services</u></b>				
410 Cleaning Services				33,824.33
420 Utility Services				44,805.51
430 Repairs and Maintenance Services				69,116.49
440 Rentals				350.25
460 Extermination Services				2,580.00
<b>Total Purchased Property Services</b>				<b>\$150,676.58</b>
<b>500 <u>Other Purchased Services</u></b>				
523 General Property and Liability Insurance				128,708.36
530 Communications				5,352.90
580 Travel				33.25
<b>Total Other Purchased Services</b>				<b>\$134,094.51</b>
<b>600 <u>Supplies</u></b>				
610 General Supplies	24,251.68	21,932.43		46,184.11
620 Energy				338,742.08
650 Supplies & Fees – Technology Related				2,126.25
<b>Total Supplies</b>	<b>\$24,251.68</b>	<b>\$21,932.43</b>		<b>\$387,052.44</b>
<b>700 <u>Property</u></b>				
756 Capitalized Technology Hardware and Equipment – Original				3,548.23
758 Capitalized Technology Software - Original				47,248.94
766 Capitalized Technology Hardware and Equipment – Replacement				12,043.24
<b>Total Property</b>				<b>\$62,840.41</b>
<b>800 <u>Other Objects</u></b>				
810 Dues and Fees				1,628.00
<b>Total Other Objects</b>				<b>\$1,628.00</b>
<b>Total 2600 Operation and Maintenance of Plant Services</b>	<b>\$24,251.68</b>	<b>\$21,932.43</b>		<b>\$2,119,623.58</b>

LEA : 121136503     Palmerton Area SD

Printed 10/26/2018 3:30:55 PM

General Fund (10)

2610 Supervision of Operation and Maintenance of Plant Services	<u>Elementary</u>	<u>Secondary</u>	<u>Federal</u>	<u>Total</u>
100 <u>Personnel Services – Salaries</u>				
100 Personnel Services – Salaries				92,228.85
<b>Total Personnel Services – Salaries</b>				<b>\$92,228.85</b>
200 <u>Personnel Services – Employee Benefits</u>				
210 Group Insurance – Contracted Provider				19,630.81
220 Social Security Contributions				6,957.95
230 PSERS Retirement Contributions				29,081.20
260 Workers' Compensation				979.00
<b>Total Personnel Services – Employee Benefits</b>				<b>\$56,648.96</b>
500 <u>Other Purchased Services</u>				
530 Communications				3,736.08
<b>Total Other Purchased Services</b>				<b>\$3,736.08</b>
600 <u>Supplies</u>				
610 General Supplies	218.62	218.62		437.24
650 Supplies & Fees – Technology Related				2,126.25
<b>Total Supplies</b>	<b>\$218.62</b>	<b>\$218.62</b>		<b>\$2,563.49</b>
700 <u>Property</u>				
766 Capitalized Technology Hardware and Equipment – Replacement				319.99
<b>Total Property</b>				<b>\$319.99</b>
800 <u>Other Objects</u>				
810 Dues and Fees				595.00
<b>Total Other Objects</b>				<b>\$595.00</b>
<b>Total 2610 Supervision of Operation and Maintenance of Plant Services</b>	<b>\$218.62</b>	<b>\$218.62</b>		<b>\$156,092.37</b>

LEA : 121136503     Palmerton Area SD

Printed 10/26/2018 3:30:55 PM

General Fund (10)				
2611 Supervision of Operation and Maintenance of Plant Services – Head of Component	<u>Elementary</u>	<u>Secondary</u>	<u>Federal</u>	<u>Total</u>
100 <u>Personnel Services – Salaries</u>				
100 Personnel Services – Salaries				92,228.85
<b>Total Personnel Services – Salaries</b>				<b>\$92,228.85</b>
200 <u>Personnel Services – Employee Benefits</u>				
210 Group Insurance – Contracted Provider				19,630.81
220 Social Security Contributions				6,957.95
230 PSERS Retirement Contributions				29,081.20
260 Workers' Compensation				979.00
<b>Total Personnel Services – Employee Benefits</b>				<b>\$56,648.96</b>
500 <u>Other Purchased Services</u>				
530 Communications				3,736.08
<b>Total Other Purchased Services</b>				<b>\$3,736.08</b>
600 <u>Supplies</u>				
610 General Supplies	218.62	218.62		437.24
650 Supplies & Fees – Technology Related				2,126.25
<b>Total Supplies</b>	<b>\$218.62</b>	<b>\$218.62</b>		<b>\$2,563.49</b>
700 <u>Property</u>				
766 Capitalized Technology Hardware and Equipment – Replacement				319.99
<b>Total Property</b>				<b>\$319.99</b>
800 <u>Other Objects</u>				
810 Dues and Fees				595.00
<b>Total Other Objects</b>				<b>\$595.00</b>
<b>Total 2611 Supervision of Operation and Maintenance of Plant Services – Head of Component</b>	<b>\$218.62</b>	<b>\$218.62</b>		<b>\$156,092.37</b>

LEA : 121136503     Palmerton Area SD

Printed 10/26/2018 3:30:55 PM

<b>General Fund (10)</b>				
<b>2620 Operation of Buildings Services</b>	<b><u>Elementary</u></b>	<b><u>Secondary</u></b>	<b><u>Federal</u></b>	<b><u>Total</u></b>
<b>100 <u>Personnel Services – Salaries</u></b>				
100 Personnel Services – Salaries				630,791.18
<b>Total Personnel Services – Salaries</b>				<b>\$630,791.18</b>
<b>200 <u>Personnel Services – Employee Benefits</u></b>				
210 Group Insurance – Contracted Provider				115,871.52
220 Social Security Contributions				47,720.69
230 PSERS Retirement Contributions				200,015.99
250 Unemployment Compensation				5,556.00
260 Workers' Compensation				6,692.10
280 Other Post-Employment Benefits (OPEB)				28,295.12
<b>Total Personnel Services – Employee Benefits</b>				<b>\$404,151.42</b>
<b>300 <u>Purchased Professional and Technical Services</u></b>				
390 Other Purchased Professional and Technical Services				26,674.83
<b>Total Purchased Professional and Technical Services</b>				<b>\$26,674.83</b>
<b>400 <u>Purchased Property Services</u></b>				
410 Cleaning Services				33,824.33
420 Utility Services				44,805.51
430 Repairs and Maintenance Services				48,861.39
440 Rentals				350.25
460 Extermination Services				2,580.00
<b>Total Purchased Property Services</b>				<b>\$130,421.48</b>
<b>500 <u>Other Purchased Services</u></b>				
523 General Property and Liability Insurance				128,708.36
530 Communications				1,616.82
580 Travel				33.25
<b>Total Other Purchased Services</b>				<b>\$130,358.43</b>
<b>600 <u>Supplies</u></b>				
610 General Supplies	15,614.15	12,320.70		27,934.85
620 Energy				333,577.40
<b>Total Supplies</b>	<b>\$15,614.15</b>	<b>\$12,320.70</b>		<b>\$361,512.25</b>
<b>700 <u>Property</u></b>				
756 Capitalized Technology Hardware and Equipment – Original				1,958.64
758 Capitalized Technology Software - Original				47,248.94
766 Capitalized Technology Hardware and Equipment – Replacement				11,723.25
<b>Total Property</b>				<b>\$60,930.83</b>
<b>800 <u>Other Objects</u></b>				
810 Dues and Fees				978.00
<b>Total Other Objects</b>				<b>\$978.00</b>
<b>Total 2620 Operation of Buildings Services</b>	<b>\$15,614.15</b>	<b>\$12,320.70</b>		<b>\$1,745,818.42</b>

LEA : 121136503     Palmerton Area SD

Printed 10/26/2018 3:30:55 PM

General Fund (10)

2630 Care and Upkeep of Grounds Services	Elementary	Secondary	Federal	Total
100 <u>Personnel Services – Salaries</u>				
100 Personnel Services – Salaries				106,989.41
<b>Total Personnel Services – Salaries</b>				<b>\$106,989.41</b>
200 <u>Personnel Services – Employee Benefits</u>				
210 Group Insurance – Contracted Provider				20,905.56
220 Social Security Contributions				8,105.14
230 PSERS Retirement Contributions				33,543.70
260 Workers' Compensation				1,134.19
<b>Total Personnel Services – Employee Benefits</b>				<b>\$63,688.59</b>
300 <u>Purchased Professional and Technical Services</u>				
324 Professional Educational Services – Employee Training and Development Services				200.00
<b>Total Purchased Professional and Technical Services</b>				<b>\$200.00</b>
400 <u>Purchased Property Services</u>				
430 Repairs and Maintenance Services				2,762.84
<b>Total Purchased Property Services</b>				<b>\$2,762.84</b>
600 <u>Supplies</u>				
610 General Supplies	7,188.31	8,162.51		15,350.82
<b>Total Supplies</b>	<b>\$7,188.31</b>	<b>\$8,162.51</b>		<b>\$15,350.82</b>
700 <u>Property</u>				
756 Capitalized Technology Hardware and Equipment – Original				1,589.59
<b>Total Property</b>				<b>\$1,589.59</b>
800 <u>Other Objects</u>				
810 Dues and Fees				55.00
<b>Total Other Objects</b>				<b>\$55.00</b>
<b>Total 2630 Care and Upkeep of Grounds Services</b>	<b>\$7,188.31</b>	<b>\$8,162.51</b>		<b>\$190,636.25</b>

LEA : 121136503     Palmerton Area SD

Printed 10/26/2018 3:30:55 PM

General Fund (10)				
2650 Vehicle Operation and Maintenance Services (Other Than Student Transportation Vehicles)	<u>Elementary</u>	<u>Secondary</u>	<u>Federal</u>	<u>Total</u>
400 <u>Purchased Property Services</u>				
430 Repairs and Maintenance Services				3,231.00
Total Purchased Property Services				\$3,231.00
600 <u>Supplies</u>				
610 General Supplies	743.77	743.77		1,487.54
620 Energy				5,164.68
Total Supplies	\$743.77	\$743.77		\$6,652.22
Total 2650 Vehicle Operation and Maintenance Services (Other Than Student Transportation Vehicles)	\$743.77	\$743.77		\$9,883.22

LEA : 121136503     Palmerton Area SD

Printed 10/26/2018 3:30:55 PM

General Fund (10)				
2660 Safety and Security Services	<u>Elementary</u>	<u>Secondary</u>	<u>Federal</u>	<u>Total</u>
300 <u>Purchased Professional and Technical Services</u>				
390 Other Purchased Professional and Technical Services				1,958.40
Total Purchased Professional and Technical Services				\$1,958.40
400 <u>Purchased Property Services</u>				
430 Repairs and Maintenance Services				14,261.26
Total Purchased Property Services				\$14,261.26
600 <u>Supplies</u>				
610 General Supplies	486.83	486.83		973.66
Total Supplies	\$486.83	\$486.83		\$973.66
Total 2660 Safety and Security Services	\$486.83	\$486.83		\$17,193.32

LEA : 121136503     Palmerton Area SD

Printed 10/26/2018 3:30:55 PM

General Fund (10)

2700 Student Transportation Services	<u>Elementary</u>	<u>Secondary</u>	<u>Federal</u>	<u>Total</u>
500 <u>Other Purchased Services</u>				
513 Contracted Carriers				997,566.14
516 Student Transportation Services From the IU				353,311.78
Total Other Purchased Services				\$1,350,877.92
Total 2700 Student Transportation Services				\$1,350,877.92

LEA : 121136503     Palmerton Area SD

Printed 10/26/2018 3:30:55 PM

General Fund (10)				
2720 Vehicle Operation Services	<u>Elementary</u>	<u>Secondary</u>	<u>Federal</u>	<u>Total</u>
500 <u>Other Purchased Services</u>				
513 Contracted Carriers				974,275.35
516 Student Transportation Services From the IU				353,311.78
Total Other Purchased Services				\$1,327,587.13
Total 2720 Vehicle Operation Services				\$1,327,587.13

LEA : 121136503     Palmerton Area SD

Printed 10/26/2018 3:30:55 PM

General Fund (10)

2750 Nonpublic Transportation	<u>Elementary</u>	<u>Secondary</u>	<u>Federal</u>	<u>Total</u>
500 <u>Other Purchased Services</u>				
513 Contracted Carriers				23,290.79
Total Other Purchased Services				\$23,290.79
Total 2750 Nonpublic Transportation				\$23,290.79

LEA : 121136503     Palmerton Area SD

Printed 10/26/2018 3:30:55 PM

General Fund (10)					
2800 Support Services – Central		<u>Elementary</u>	<u>Secondary</u>	<u>Federal</u>	<u>Total</u>
<b>100 <u>Personnel Services – Salaries</u></b>					
100 Personnel Services – Salaries					219,971.58
<b>Total Personnel Services – Salaries</b>					<b>\$219,971.58</b>
<b>200 <u>Personnel Services – Employee Benefits</u></b>					
210 Group Insurance – Contracted Provider					64,791.89
220 Social Security Contributions					16,543.52
230 PSERS Retirement Contributions					70,857.09
240 Tuition Reimbursement					1,535.00
260 Workers' Compensation					2,333.21
<b>Total Personnel Services – Employee Benefits</b>					<b>\$156,060.71</b>
<b>300 <u>Purchased Professional and Technical Services</u></b>					
330 Other Professional Services					3,925.00
340 Technical Services					22,353.60
<b>Total Purchased Professional and Technical Services</b>					<b>\$26,278.60</b>
<b>500 <u>Other Purchased Services</u></b>					
530 Communications					404.89
550 Printing and Binding					160.50
580 Travel					314.01
<b>Total Other Purchased Services</b>					<b>\$879.40</b>
<b>600 <u>Supplies</u></b>					
610 General Supplies					4,675.51
630 Food					49.55
<b>Total Supplies</b>					<b>\$4,725.06</b>
<b>700 <u>Property</u></b>					
756 Capitalized Technology Hardware and Equipment – Original					245.89
<b>Total Property</b>					<b>\$245.89</b>
<b>800 <u>Other Objects</u></b>					
810 Dues and Fees					225.00
<b>Total Other Objects</b>					<b>\$225.00</b>
<b>Total 2800 Support Services – Central</b>					<b>\$408,386.24</b>

LEA : 121136503     Palmerton Area SD

Printed 10/26/2018 3:30:55 PM

General Fund (10)

2810 Planning, Research, Development and Evaluation Services	<u>Elementary</u>	<u>Secondary</u>	<u>Federal</u>	<u>Total</u>
100 <u>Personnel Services – Salaries</u>				
100 Personnel Services – Salaries				131,171.08
Total Personnel Services – Salaries				\$131,171.08
200 <u>Personnel Services – Employee Benefits</u>				
210 Group Insurance – Contracted Provider				44,180.43
220 Social Security Contributions				9,838.00
230 PSERS Retirement Contributions				42,480.50
260 Workers' Compensation				1,391.30
Total Personnel Services – Employee Benefits				\$97,890.23
Total 2810 Planning, Research, Development and Evaluation Services				\$229,061.31

LEA : 121136503     Palmerton Area SD

Printed 10/26/2018 3:30:55 PM

<b>General Fund (10)</b>				
<b>2830 Staff Services</b>	<u>Elementary</u>	<u>Secondary</u>	<u>Federal</u>	<u>Total</u>
<b>100 <u>Personnel Services – Salaries</u></b>				
100 Personnel Services – Salaries				88,800.50
<b>Total Personnel Services – Salaries</b>				<b>\$88,800.50</b>
<b>200 <u>Personnel Services – Employee Benefits</u></b>				
210 Group Insurance – Contracted Provider				20,611.46
220 Social Security Contributions				6,705.52
230 PSERS Retirement Contributions				28,376.59
240 Tuition Reimbursement				1,535.00
260 Workers' Compensation				941.91
<b>Total Personnel Services – Employee Benefits</b>				<b>\$58,170.48</b>
<b>300 <u>Purchased Professional and Technical Services</u></b>				
330 Other Professional Services				3,925.00
<b>Total Purchased Professional and Technical Services</b>				<b>\$3,925.00</b>
<b>500 <u>Other Purchased Services</u></b>				
530 Communications				404.89
550 Printing and Binding				160.50
580 Travel				314.01
<b>Total Other Purchased Services</b>				<b>\$879.40</b>
<b>600 <u>Supplies</u></b>				
610 General Supplies				4,675.51
630 Food				49.55
<b>Total Supplies</b>				<b>\$4,725.06</b>
<b>700 <u>Property</u></b>				
756 Capitalized Technology Hardware and Equipment – Original				245.89
<b>Total Property</b>				<b>\$245.89</b>
<b>800 <u>Other Objects</u></b>				
810 Dues and Fees				225.00
<b>Total Other Objects</b>				<b>\$225.00</b>
<b>Total 2830 Staff Services</b>				<b>\$156,971.33</b>

LEA : 121136503     Palmerton Area SD

Printed 10/26/2018 3:30:55 PM

General Fund (10)				
2832 Recruitment and Placement Services	Elementary	Secondary	Federal	Total
100 <u>Personnel Services – Salaries</u>				
100 Personnel Services – Salaries				88,800.50
Total Personnel Services – Salaries				\$88,800.50
200 <u>Personnel Services – Employee Benefits</u>				
210 Group Insurance – Contracted Provider				20,611.46
220 Social Security Contributions				6,705.52
230 PSERS Retirement Contributions				28,376.59
260 Workers' Compensation				941.91
Total Personnel Services – Employee Benefits				\$56,635.48
300 <u>Purchased Professional and Technical Services</u>				
330 Other Professional Services				3,925.00
Total Purchased Professional and Technical Services				\$3,925.00
500 <u>Other Purchased Services</u>				
530 Communications				404.89
550 Printing and Binding				160.50
580 Travel				314.01
Total Other Purchased Services				\$879.40
600 <u>Supplies</u>				
610 General Supplies				4,675.51
630 Food				49.55
Total Supplies				\$4,725.06
700 <u>Property</u>				
756 Capitalized Technology Hardware and Equipment – Original				245.89
Total Property				\$245.89
800 <u>Other Objects</u>				
810 Dues and Fees				225.00
Total Other Objects				\$225.00
Total 2832 Recruitment and Placement Services				\$155,436.33

LEA : 121136503     Palmerton Area SD

Printed 10/26/2018 3:30:55 PM

General Fund (10)

2834 Staff Development Services – Non-Instructional, Certified Staff Only	<u>Elementary</u>	<u>Secondary</u>	<u>Federal</u>	<u>Total</u>
200 <u>Personnel Services – Employee Benefits</u>				
240 Tuition Reimbursement				1,535.00
Total Personnel Services – Employee Benefits				\$1,535.00
Total 2834 Staff Development Services – Non-Instructional, Certified Staff Only				\$1,535.00

LEA : 121136503     Palmerton Area SD

Printed 10/26/2018 3:30:55 PM

General Fund (10)

2840 Data Processing Services

<u>Elementary</u>	<u>Secondary</u>	<u>Federal</u>	<u>Total</u>
-------------------	------------------	----------------	--------------

300 Purchased Professional and Technical Services

340 Technical Services			22,353.60
------------------------	--	--	-----------

<b>Total Purchased Professional and Technical Services</b>			<b>\$22,353.60</b>
--	--	--	--------------------

<b>Total 2840 Data Processing Services</b>			<b>\$22,353.60</b>
--	--	--	--------------------

LEA : 121136503     Palmerton Area SD

Printed 10/26/2018 3:30:55 PM

General Fund (10)

2900 Other Support Services	<u>Elementary</u>	<u>Secondary</u>	<u>Federal</u>	<u>Total</u>
500 <u>Other Purchased Services</u>				
595 IU Payments By Withholding				22,173.87
Total Other Purchased Services				\$22,173.87
Total 2900 Other Support Services				\$22,173.87

LEA : 121136503     Palmerton Area SD

Printed 10/26/2018 3:30:55 PM

General Fund (10)

2910 Support Services Not Listed Elsewhere In the 2000 Series

Elementary

Secondary

Federal

Total

500 <u>Other Purchased Services</u>				
595 IU Payments By Withholding				22,173.87
Total Other Purchased Services				\$22,173.87
Total 2910 Support Services Not Listed Elsewhere In the 2000 Series				\$22,173.87

LEA : 121136503      Palmerton Area SD

Printed 10/26/2018 3:30:59 PM

General Fund (10)

<b>3000 Operation of Non-Instructional Services</b>	<b><u>Total</u></b>
<b>100 <u>Personnel Services – Salaries</u></b>	
100 Personnel Services – Salaries	363,329.42
<b>Total Personnel Services – Salaries</b>	<b>\$363,329.42</b>
<b>200 <u>Personnel Services – Employee Benefits</u></b>	
210 Group Insurance – Contracted Provider	23,459.83
220 Social Security Contributions	27,625.44
230 PSERS Retirement Contributions	113,219.55
250 Unemployment Compensation	262.01
260 Workers' Compensation	3,834.38
<b>Total Personnel Services – Employee Benefits</b>	<b>\$168,401.21</b>
<b>300 <u>Purchased Professional and Technical Services</u></b>	
324 Professional Educational Services – Employee Training and Development Services	3,045.00
329 Professional Educational Services – Other	1,750.00
330 Other Professional Services	46,268.42
350 Security / Safety Services	48,561.04
390 Other Purchased Professional and Technical Services	1,515.00
<b>Total Purchased Professional and Technical Services</b>	<b>\$101,139.46</b>
<b>400 <u>Purchased Property Services</u></b>	
410 Cleaning Services	4,344.70
430 Repairs and Maintenance Services	29,533.61
440 Rentals	3,173.00
<b>Total Purchased Property Services</b>	<b>\$37,051.31</b>
<b>500 <u>Other Purchased Services</u></b>	
510 Student Transportation Services	65,818.11
520 Insurance – General	35,706.00
530 Communications	1,621.38
550 Printing and Binding	2,513.53
580 Travel	10,516.72
<b>Total Other Purchased Services</b>	<b>\$116,175.74</b>
<b>600 <u>Supplies</u></b>	
610 General Supplies	83,288.05
630 Food	950.00
<b>Total Supplies</b>	<b>\$84,238.05</b>
<b>700 <u>Property</u></b>	
756 Capitalized Technology Hardware and Equipment – Original	29,171.56
766 Capitalized Technology Hardware and Equipment – Replacement	1,332.00
<b>Total Property</b>	<b>\$30,503.56</b>
<b>800 <u>Other Objects</u></b>	
810 Dues and Fees	26,289.83
860 Grants To Municipal and Community Service Organizations	14,584.00
<b>Total Other Objects</b>	<b>\$40,873.83</b>
<b>Total 3000 Operation of Non-Instructional Services</b>	<b>\$941,712.58</b>

LEA : 121136503     Palmerton Area SD

Printed 10/26/2018 3:30:59 PM

<b>General Fund (10)</b>				
<b>3200 Student Activities</b>	<u>Elementary</u>	<u>Secondary</u>	<u>Federal</u>	<u>Total</u>
<b>100 <u>Personnel Services – Salaries</u></b>				
100 Personnel Services – Salaries				362,860.15
<b>Total Personnel Services – Salaries</b>				<b>\$362,860.15</b>
<b>200 <u>Personnel Services – Employee Benefits</u></b>				
210 Group Insurance – Contracted Provider				23,459.83
220 Social Security Contributions				27,589.53
230 PSERS Retirement Contributions				113,066.70
250 Unemployment Compensation				262.01
260 Workers' Compensation				3,829.42
<b>Total Personnel Services – Employee Benefits</b>				<b>\$168,207.49</b>
<b>300 <u>Purchased Professional and Technical Services</u></b>				
324 Professional Educational Services – Employee Training and Development Services				3,045.00
329 Professional Educational Services – Other				1,750.00
330 Other Professional Services				46,268.42
350 Security / Safety Services				9,396.74
390 Other Purchased Professional and Technical Services				1,515.00
<b>Total Purchased Professional and Technical Services</b>				<b>\$61,975.16</b>
<b>400 <u>Purchased Property Services</u></b>				
410 Cleaning Services				4,344.70
430 Repairs and Maintenance Services				29,533.61
440 Rentals				3,173.00
<b>Total Purchased Property Services</b>				<b>\$37,051.31</b>
<b>500 <u>Other Purchased Services</u></b>				
510 Student Transportation Services				65,818.11
520 Insurance – General				35,706.00
530 Communications				1,621.38
550 Printing and Binding				2,513.53
580 Travel				10,516.72
<b>Total Other Purchased Services</b>				<b>\$116,175.74</b>
<b>600 <u>Supplies</u></b>				
610 General Supplies				83,288.05
630 Food				950.00
<b>Total Supplies</b>				<b>\$84,238.05</b>
<b>700 <u>Property</u></b>				
756 Capitalized Technology Hardware and Equipment – Original				29,171.56
766 Capitalized Technology Hardware and Equipment – Replacement				1,332.00
<b>Total Property</b>				<b>\$30,503.56</b>
<b>800 <u>Other Objects</u></b>				
810 Dues and Fees				26,289.83
<b>Total Other Objects</b>				<b>\$26,289.83</b>
<b>Total 3200 Student Activities</b>				<b>\$887,301.29</b>

LEA : 121136503     Palmerton Area SD

Printed 10/26/2018 3:30:59 PM

<b>General Fund (10)</b>				
<b>3300 Community Services</b>	<u><b>Elementary</b></u>	<u><b>Secondary</b></u>	<u><b>Federal</b></u>	<u><b>Total</b></u>
<b>100 <u>Personnel Services – Salaries</u></b>				
100 Personnel Services – Salaries			469.27	469.27
<b>Total Personnel Services – Salaries</b>			<b>\$469.27</b>	<b>\$469.27</b>
<b>200 <u>Personnel Services – Employee Benefits</u></b>				
220 Social Security Contributions			35.91	35.91
230 PSERS Retirement Contributions			152.85	152.85
260 Workers’ Compensation			4.96	4.96
<b>Total Personnel Services – Employee Benefits</b>			<b>\$193.72</b>	<b>\$193.72</b>
<b>300 <u>Purchased Professional and Technical Services</u></b>				
350 Security / Safety Services				39,164.30
<b>Total Purchased Professional and Technical Services</b>				<b>\$39,164.30</b>
<b>800 <u>Other Objects</u></b>				
860 Grants To Municipal and Community Service Organizations				14,584.00
<b>Total Other Objects</b>				<b>\$14,584.00</b>
<b>Total 3300 Community Services</b>			<b>\$662.99</b>	<b>\$54,411.29</b>

LEA : 121136503     Palmerton Area SD

Printed 10/26/2018 3:31:02 PM

General Fund (10)	
5000 Other Expenditures and Financing Uses	<u>Total</u>
800 <u>Other Objects</u>	
830 Interest	918,919.50
Total Other Objects	\$918,919.50
900 <u>Other Uses of Funds</u>	
910 Redemption of Principal	1,236,300.00
930 Fund Transfers	76,651.23
Total Other Uses of Funds	\$1,312,951.23
Total 5000 Other Expenditures and Financing Uses	\$2,231,870.73

LEA : 121136503     Palmerton Area SD

Printed 10/26/2018 3:31:02 PM

General Fund (10)				
5100 Debt Service / Other Expenditures and Financing Uses	<u>Elementary</u>	<u>Secondary</u>	<u>Federal</u>	<u>Total</u>
800 <u>Other Objects</u>				
830 Interest				918,919.50
Total Other Objects				\$918,919.50
900 <u>Other Uses of Funds</u>				
910 Redemption of Principal				1,236,300.00
Total Other Uses of Funds				\$1,236,300.00
Total 5100 Debt Service / Other Expenditures and Financing Uses				\$2,155,219.50

LEA : 121136503     Palmerton Area SD

Printed 10/26/2018 3:31:02 PM

General Fund (10)

5110 Debt Service	<u>Elementary</u>	<u>Secondary</u>	<u>Federal</u>	<u>Total</u>
800 <u>Other Objects</u>				
830 Interest				918,919.50
Total Other Objects				\$918,919.50
900 <u>Other Uses of Funds</u>				
910 Redemption of Principal				1,236,300.00
Total Other Uses of Funds				\$1,236,300.00
Total 5110 Debt Service				\$2,155,219.50

LEA : 121136503     Palmerton Area SD

Printed 10/26/2018 3:31:02 PM

General Fund (10)

5200 Interfund Transfers – Out	<u>Elementary</u>	<u>Secondary</u>	<u>Federal</u>	<u>Total</u>
900 <u>Other Uses of Funds</u>				
930 Fund Transfers				76,651.23
Total Other Uses of Funds				\$76,651.23
Total 5200 Interfund Transfers – Out				\$76,651.23

LEA : 121136503     Palmerton Area SD

Printed 10/26/2018 3:31:02 PM

General Fund (10)

5250 Enterprise Fund Transfers	<u>Elementary</u>	<u>Secondary</u>	<u>Federal</u>	<u>Total</u>
900 <u>Other Uses of Funds</u>				
930 Fund Transfers				76,651.23
Total Other Uses of Funds				\$76,651.23
Total 5250 Enterprise Fund Transfers				\$76,651.23

LEA : 121136503     Palmerton Area SD

Printed 10/26/2018 3:30:58 PM

Other Capital Projects Fund (39)

2000 Support Services		<u>Total</u>
400 <u>Purchased Property Services</u>		
430 Repairs and Maintenance Services	4,406.00	
Total Purchased Property Services	\$4,406.00	
600 <u>Supplies</u>		
610 General Supplies	336.09	
Total Supplies	\$336.09	
700 <u>Property</u>		
752 Capital Equipment – Original and Additional	96,948.24	
Total Property	\$96,948.24	
Total 2000 Support Services	\$101,690.33	

LEA : 121136503     Palmerton Area SD

Printed 10/26/2018 3:30:58 PM

Other Capital Projects Fund (39)

2600 Operation and Maintenance of Plant Services	<u>Elementary</u>	<u>Secondary</u>	<u>Federal</u>	<u>Total</u>
400 <u>Purchased Property Services</u>				
430 Repairs and Maintenance Services				4,406.00
<b>Total Purchased Property Services</b>				<b>\$4,406.00</b>
600 <u>Supplies</u>				
610 General Supplies	168.04	168.05		336.09
<b>Total Supplies</b>	<b>\$168.04</b>	<b>\$168.05</b>		<b>\$336.09</b>
700 <u>Property</u>				
752 Capital Equipment – Original and Additional				96,948.24
<b>Total Property</b>				<b>\$96,948.24</b>
<b>Total 2600 Operation and Maintenance of Plant Services</b>	<b>\$168.04</b>	<b>\$168.05</b>		<b>\$101,690.33</b>

LEA : 121136503     Palmerton Area SD

Printed 10/26/2018 3:30:58 PM

Other Capital Projects Fund (39)

2620 Operation of Buildings Services	<u>Elementary</u>	<u>Secondary</u>	<u>Federal</u>	<u>Total</u>
400 <u>Purchased Property Services</u>				
430 Repairs and Maintenance Services				4,406.00
<b>Total Purchased Property Services</b>				<b>\$4,406.00</b>
600 <u>Supplies</u>				
610 General Supplies	168.04	168.05		336.09
<b>Total Supplies</b>	<b>\$168.04</b>	<b>\$168.05</b>		<b>\$336.09</b>
700 <u>Property</u>				
752 Capital Equipment – Original and Additional				96,948.24
<b>Total Property</b>				<b>\$96,948.24</b>
<b>Total 2620 Operation of Buildings Services</b>	<b>\$168.04</b>	<b>\$168.05</b>		<b>\$101,690.33</b>

LEA : 121136503      Palmerton Area SD

Printed 10/26/2018 3:31:01 PM

Other Capital Projects Fund (39)

<b>4000 Facilities Acquisition, Construction and Improvement Services</b>	<u><b>Total</b></u>
<b>300 <u>Purchased Professional and Technical Services</u></b>	
330 Other Professional Services	356,825.70
<b>Total Purchased Professional and Technical Services</b>	<b>\$356,825.70</b>
<b>400 <u>Purchased Property Services</u></b>	
440 Rentals	7,466.85
450 Construction Services	9,176,400.29
<b>Total Purchased Property Services</b>	<b>\$9,183,867.14</b>
<b>700 <u>Property</u></b>	
756 Capitalized Technology Hardware and Equipment – Original	14,428.77
758 Capitalized Technology Software - Original	19,130.00
766 Capitalized Technology Hardware and Equipment – Replacement	25,470.64
<b>Total Property</b>	<b>\$59,029.41</b>
<b>Total 4000 Facilities Acquisition, Construction and Improvement Services</b>	<b>\$9,599,722.25</b>

LEA : 121136503     Palmerton Area SD

Printed 10/26/2018 3:31:01 PM

Other Capital Projects Fund (39)

4100 Site Acquisition Services – Original and Additional	<u>Elementary</u>	<u>Secondary</u>	<u>Federal</u>	<u>Total</u>
300 <u>Purchased Professional and Technical Services</u>				
330 Other Professional Services				356,825.70
<b>Total Purchased Professional and Technical Services</b>				<b>\$356,825.70</b>
400 <u>Purchased Property Services</u>				
440 Rentals				7,466.85
450 Construction Services				9,176,400.29
<b>Total Purchased Property Services</b>				<b>\$9,183,867.14</b>
700 <u>Property</u>				
756 Capitalized Technology Hardware and Equipment – Original				14,428.77
758 Capitalized Technology Software - Original				19,130.00
766 Capitalized Technology Hardware and Equipment – Replacement				25,470.64
<b>Total Property</b>				<b>\$59,029.41</b>
<b>Total 4100 Site Acquisition Services – Original and Additional</b>				<b>\$9,599,722.25</b>

LEA : 121136503     Palmerton Area SD

Printed 10/26/2018 3:31:04 PM

	General Fund(10)	Public Purpose Trust(27)	Other Compt Approved(28)	Athletic / Activity(29)	Capital Reserve (690.1850)(31)
<b>1000 Instruction</b>					
1100 Regular Programs - Elementary / Secondary	11,953,356.55				
1200 Special Programs - Elementary / Secondary	4,409,114.17				
1300 Vocational Education	2,370,637.44				
1400 Other Instructional Programs - Elementary / Secondary	177,621.23				
1500 Nonpublic School Programs	4,707.00				
1600 Adult Education Programs	197,693.00				
<b>Total Instruction</b>	<b>\$19,113,129.39</b>				
<b>2000 Support Services</b>					
2100 Support Services - Students	811,303.63				
2200 Support Services - Instructional Staff	556,387.65				
2300 Support Services - Administration	1,395,662.87				
2400 Support Services - Pupil Health	295,556.00				
2500 Support Services - Business	472,280.79				
2600 Operation and Maintenance of Plant Services	2,119,623.58				
2700 Student Transportation Services	1,350,877.92				
2800 Support Services - Central	408,386.24				
2900 Other Support Services	22,173.87				
<b>Total Support Services</b>	<b>\$7,432,252.55</b>				
<b>3000 Operation of Non-Instructional Services</b>					
3200 Student Activities	887,301.29				
3300 Community Services	54,411.29				
<b>Total Operation of Non-Instructional Services</b>	<b>\$941,712.58</b>				
<b>4000 Facilities Acquisition, Construction and Improvement Services</b>					
4100 Site Acquisition Services - Original and Additional					
<b>Total Facilities Acquisition, Construction and Improvement Services</b>					
<b>5000 Other Expenditures and Financing Uses</b>					
5100 Debt Service / Other Expenditures and Financing Uses	2,155,219.50				
5200 Interfund Transfers - Out	76,651.23				
<b>Total Other Expenditures and Financing Uses</b>	<b>\$2,231,870.73</b>				
<b>TOTAL ACTUAL EXPENDITURES &amp; OTHER FINANCING USES</b>	<b>\$29,718,965.25</b>				

LEA : 121136503     Palmerton Area SD

Printed 10/26/2018 3:31:04 PM

	<u>Capital Reserve (1431)(32)</u>	<u>Other Capital Projects Fund(39)</u>	<u>Debt Service(40)</u>	<u>Permanent(90)</u>	<u>Total</u>
<b>1000 Instruction</b>					
1100 Regular Programs - Elementary / Secondary					11,953,356.55
1200 Special Programs - Elementary / Secondary					4,409,114.17
1300 Vocational Education					2,370,637.44
1400 Other Instructional Programs - Elementary / Secondary					177,621.23
1500 Nonpublic School Programs					4,707.00
1600 Adult Education Programs					197,693.00
<b>Total Instruction</b>					<b>\$19,113,129.39</b>
<b>2000 Support Services</b>					
2100 Support Services - Students					811,303.63
2200 Support Services - Instructional Staff					556,387.65
2300 Support Services - Administration					1,395,662.87
2400 Support Services - Pupil Health					295,556.00
2500 Support Services - Business					472,280.79
2600 Operation and Maintenance of Plant Services		101,690.33			2,221,313.91
2700 Student Transportation Services					1,350,877.92
2800 Support Services - Central					408,386.24
2900 Other Support Services					22,173.87
<b>Total Support Services</b>		<b>\$101,690.33</b>			<b>\$7,533,942.88</b>
<b>3000 Operation of Non-Instructional Services</b>					
3200 Student Activities					887,301.29
3300 Community Services					54,411.29
<b>Total Operation of Non-Instructional Services</b>					<b>\$941,712.58</b>
<b>4000 Facilities Acquisition, Construction and Improvement Services</b>					
4100 Site Acquisition Services - Original and Additional		9,599,722.25			9,599,722.25
<b>Total Facilities Acquisition, Construction and Improvement Services</b>		<b>\$9,599,722.25</b>			<b>\$9,599,722.25</b>
<b>5000 Other Expenditures and Financing Uses</b>					
5100 Debt Service / Other Expenditures and Financing Uses					2,155,219.50
5200 Interfund Transfers - Out					76,651.23
<b>Total Other Expenditures and Financing Uses</b>					<b>\$2,231,870.73</b>
<b>TOTAL ACTUAL EXPENDITURES &amp; OTHER FINANCING USES</b>		<b>\$9,701,412.58</b>			<b>\$39,420,377.83</b>

LEA : 121136503     Palmerton Area SD

Printed 10/26/2018 3:31:09 PM

PSERS Salary Data (Salary Data should relate to the General Fund only)

Amount	Description	Amount
	Total Salary Base for salaries subject to PSERS withholding	11,884,468.50
	Total Federally Funded salaries subject to PSERS withholding	617,431.58

Title I Expenditure Data

Amount	Description	Amount
	Expenditures Funded with Current Title I Funds	346,122.30
	Expenditures Funded with Carry over Title I Funds	
Total	Title I Expenditure Data	\$346,122.30

Benefits for Staff Relative to Collective Bargaining Agreements

	OBJECT	COVERED	NOT COVERED	TOTAL
10 General Fund	No Self Insurance data to report			
	211 Medical Insurance	1,464,564.00	240,758.00	1,705,322.00
	212 Dental Insurance	104,041.00	10,706.00	114,747.00
	215 Eye Care Insurance			
	216 Prescription Insurance			
	271 Self-Insurance Medical Benefits			
	272 Self-Insurance Dental Benefits			
	275 Self-Insurance Eye Care Benefits			
	276 Self-Insurance Prescription Benefits			
	FUND TOTAL	\$1,568,605.00	\$251,464.00	\$1,820,069.00
50 Enterprise Fund	No Self Insurance data to report			
	211 Medical Insurance			
	212 Dental Insurance			
	215 Eye Care Insurance			
	216 Prescription Insurance			
	271 Self-Insurance Medical Benefits			
	272 Self-Insurance Dental Benefits			
	275 Self-Insurance Eye Care Benefits			
	276 Self-Insurance Prescription Benefits			
	FUND TOTAL			
60 Internal Service Fund	No Self Insurance data to report			
	211 Medical Insurance			
	212 Dental Insurance			
	215 Eye Care Insurance			
	216 Prescription Insurance			
	271 Self-Insurance Medical Benefits			
	272 Self-Insurance Dental Benefits			
	275 Self-Insurance Eye Care Benefits			
	276 Self-Insurance Prescription Benefits			
	FUND TOTAL			
Total of All Funds		\$1,568,605.00	\$251,464.00	\$1,820,069.00

LEA : 121136503     Palmerton Area SD

Printed 10/26/2018 3:31:11 PM

Function	Special Education (Prior Year)	Nonspecial Education (Prior Year)	Total (Prior Year)	Special Education (Current Year)	Nonspecial Education (Current Year)	Total (Current Year)
2120 Guidance Services	232,730.08	349,095.11	581,825.19	258,869.93	388,304.89	647,174.82
2140 Psychological Services	140,559.79	15,617.75	156,177.54	147,715.93	16,412.88	164,128.81
2150 Speech Pathology and Audiology Services						
2160 Social Work Services						
2260 Instruction and Curriculum Development Services	29,303.63	166,053.91	195,357.54	28,883.66	163,674.10	192,557.76
2350 Legal and Accounting Services	2,652.67	23,873.99	26,526.66	2,350.90	21,158.10	23,509.00
2420 Medical Services						
2440 Nursing Services	13,352.67	253,700.71	267,053.38	14,702.80	279,353.20	294,056.00
2700 Student Transportation Services	569,803.26	854,704.89	1,424,508.15	531,034.85	796,552.28	1,327,587.13
Total	\$988,402.10	\$1,663,046.36	\$2,651,448.46	\$983,558.07	\$1,665,455.45	\$2,649,013.52

LEA : 121136503     Palmerton Area SD

Printed 10/26/2018 3:31:13 PM

	(PRINCIPAL AMOUNTS ONLY)							
<u>GOVERNMENTAL FUNDS/ ACTIVITIES</u>	Short-Term Borrowing	General Obligation Bonds/Notes	Authority Building Obligations	Other Long-Term Debt	Other Post- Employment Benefits (OPEB)	Compensated Absences	Net Pension Liability	Total
1. Debt at Beginning of Fiscal Year		30,600,000.00		1,054,972.00	1,874,584.00	91,068.00	41,500,272.00	75,120,896.00
2. Additional Debt Incurred During Year					7,567,238.00	2,849.00		7,570,087.00
3. Retirements and Repayments		1,085,000.00		151,300.00			2,306,204.00	3,542,504.00
4. Debt at End of Fiscal Year		29,515,000.00		903,672.00	9,441,822.00	93,917.00	39,194,068.00	79,148,479.00
5. Accreted Interest at End Of Fiscal Year								
6. Total Debt and Accreted Interest		29,515,000.00		903,672.00	9,441,822.00	93,917.00	39,194,068.00	79,148,479.00
7. Current Portion P&I - Due within 1 year		2,077,359.00		164,010.00		62,943.00		2,304,312.00
8. Interest Paid during current fiscal year		874,019.51		44,900.00				918,919.51

(PRINCIPAL AMOUNTS ONLY)								
<u>PROPRIETARY FUNDS</u>	Short-Term Borrowing	General Obligation Bonds/Notes	Authority Building Obligations	Other Long-Term Debt	Other Post- Employment Benefits (OPEB)	Compensated Absences	Net Pension Liability	Total
1. Debt at Beginning of Fiscal Year						2,123.00	1,107,160.00	1,109,283.00
2. Additional Debt Incurred During Year					44,741.00	792.00		45,533.00
3. Retirements and Repayments							63,354.00	63,354.00
4. Debt at End of Fiscal Year					44,741.00	2,915.00	1,043,806.00	1,091,462.00
5. Accreted Interest at End Of Fiscal Year								
6. Total Debt and Accreted Interest					44,741.00	2,915.00	1,043,806.00	1,091,462.00
7. Current Portion P&I - Due within 1 year								
8. Interest Paid during current fiscal year								

LEA : 121136503     Palmerton Area SD

Printed 10/26/2018 3:31:13 PM

Total Principal and Interest Payments Made by Your School - All Funds

Function	Fund		Principal (910)	Principal (920)	Interest (830)	Total (Principal +Interest)	Misc Other Uses (990)
5110	10	General Fund	1,236,300.00		918,919.50	2,155,219.50	
5110	20	Special Revenue Funds					
5110	30	Capital Projects Funds					
5110	40	Debt Service Fund					
5110	90	Permanent Fund					
5120	10	General Fund					
5120	20	Special Revenue Funds					
5120	30	Capital Projects Funds					
5120	40	Debt Service Fund					
Total Debt Payments - Governmental Funds			\$1,236,300.00		\$918,919.50	\$2,155,219.50	

Function	Fund		Principal (910)	Principal (920)	Interest (830)	Total (Principal +Interest)
5110	50	Enterprise Fund				
5110	60	Internal Service Fund				
5120	50	Enterprise Fund				
5120	60	Internal Service Fund				
Total Debt Payments - Proprietary Funds						

LEA : 121136503     Palmerton Area SD

Printed 10/26/2018 3:31:13 PM

**Debt Details**  
**Governmental Funds/ Activities**

Debt Category	Debt Issue Date (MM/YYYY)	Principal Amounts Only				Current Portion Due Within One Year (Principal and Interest)	Interest Paid During Fiscal Year
		Debt at Beginning of Fiscal Year	Additions	Reductions / Repayments	Debt at End of Fiscal Year		
General Obligation Bonds/Notes – CIB	12/2016	9,755,000.00		5,000.00	9,750,000.00	409,640.00	295,265.00
General Obligation Bonds/Notes – CIB	12/2015	9,715,000.00		110,000.00	9,605,000.00	771,398.00	224,112.00
General Obligation Bonds/Notes – CIB	12/2015	9,610,000.00		5,000.00	9,605,000.00	337,575.00	332,675.00
General Obligation Bonds/Notes – CIB	03/2012	1,520,000.00		965,000.00	555,000.00	558,746.00	21,967.51
Extended Term Financing Agreements		1,054,972.00		151,300.00	903,672.00	164,010.00	44,900.00
Compensated Absences		91,068.00	2,849.00		93,917.00	62,943.00	
Other Post-Employment Benefits (OPEB)		1,874,584.00	7,567,238.00		9,441,822.00		
Net Pension Liability		41,500,272.00		2,306,204.00	39,194,068.00		
<b>Totals for Debt Entered:</b>		<b>\$75,120,896.00</b>	<b>\$7,570,087.00</b>	<b>\$3,542,504.00</b>	<b>\$79,148,479.00</b>	<b>\$2,304,312.00</b>	<b>\$918,919.51</b>

**Bond Details**  
**Proprietary Funds**

Debt Category	Debt Issue Date (MM/YYYY)	Principal Amounts Only				Current Portion Due Within One Year (Principal and Interest)	Interest Paid During Fiscal Year
		Debt at Beginning of Fiscal Year	Additions	Reductions / Repayments	Debt at End of Fiscal Year		
Compensated Absences		2,123.00	792.00		2,915.00		
Other Post-Employment Benefits (OPEB)			44,741.00		44,741.00		
Net Pension Liability		1,107,160.00		63,354.00	1,043,806.00		
<b>Totals for Debt Entered:</b>		<b>\$1,109,283.00</b>	<b>\$45,533.00</b>	<b>\$63,354.00</b>	<b>\$1,091,462.00</b>		

LEA : 121136503     Palmerton Area SD

Printed 10/26/2018 3:31:14 PM

**General Fund (10)**

Section 1: Tuition/Purchased Services as Reported within Expenditure Detail	Amount
Tuition Reported in General Fund Expenditures 1000-560	4,029,667.81
Purchased Services in General Fund Expenditures 1000-594 and 1000-597	
<b>Section 1 Total</b>	<b>\$4,029,667.81</b>

Section 2: Tuition Paid to Institution Types During Fiscal Year	Tuition Paid For Nonspecial Education	Tuition Paid For Special Education	Total
1    1306 Institutions			
2    Institutionalized Children's Programs			
3    Juveniles Incarcerated in Adult Facilities		11,901.43	11,901.43
4    Residential Treatment Facilities			
5    Other Local Education Agencies		24,593.86	24,593.86
6    Brick and Mortar Charter Schools	33,881.61		33,881.61
7    Cyber Charter Schools	687,874.39	160,556.77	848,431.16
8    Career and Technology Centers	1,902,448.60	305,790.00	2,208,238.60
9    Approved Private Schools	148,501.40	556,426.75	704,928.15
10   PA Chartered Schools for the Deaf and Blind			
11   Private Residential Rehabilitative Institutions			
12   Juvenile Detention Centers			
13   Special Program Jointures			
14   Other Tuition Not Included Elsewhere In This Section	197,693.00		197,693.00
<b>Section 2 Total</b>	<b>\$2,970,399.00</b>	<b>\$1,059,268.81</b>	<b>\$4,029,667.81</b>

LEA : 121136503     Palmerton Area SD

Printed 10/26/2018 3:31:15 PM

Food Service / Cafeteria Operations Fund (51)

3000 Operation of Non-Instructional Services		<u>Total</u>
100 <u>Personnel Services – Salaries</u>		
100 Personnel Services – Salaries		304,050.00
Total Personnel Services – Salaries		\$304,050.00
200 <u>Personnel Services – Employee Benefits</u>		
210 Group Insurance – Contracted Provider		6,521.24
220 Social Security Contributions		23,198.47
230 PSERS Retirement Contributions		118,439.57
260 Workers' Compensation		3,198.72
Total Personnel Services – Employee Benefits		\$151,358.00
500 <u>Other Purchased Services</u>		
530 Communications		1,042.58
570 Food Service Management		495,124.64
580 Travel		915.78
Total Other Purchased Services		\$497,083.00
600 <u>Supplies</u>		
610 General Supplies		4,573.24
630 Food		56,055.76
Total Supplies		\$60,629.00
700 <u>Property</u>		
740 Depreciation		20,749.00
Total Property		\$20,749.00
800 <u>Other Objects</u>		
810 Dues and Fees		265.00
Total Other Objects		\$265.00
Total 3000 Operation of Non-Instructional Services		\$1,034,134.00

LEA : 121136503     Palmerton Area SD

Printed 10/26/2018 3:31:15 PM

Food Service / Cafeteria Operations Fund (51)

3100 Food Services	<u>Elementary</u>	<u>Secondary</u>	<u>Federal</u>	<u>Total</u>
100 <u>Personnel Services – Salaries</u>				
100 Personnel Services – Salaries				304,050.00
<b>Total Personnel Services – Salaries</b>				<b>\$304,050.00</b>
200 <u>Personnel Services – Employee Benefits</u>				
210 Group Insurance – Contracted Provider				6,521.24
220 Social Security Contributions				23,198.47
230 PSERS Retirement Contributions				118,439.57
260 Workers' Compensation				3,198.72
<b>Total Personnel Services – Employee Benefits</b>				<b>\$151,358.00</b>
500 <u>Other Purchased Services</u>				
530 Communications				1,042.58
570 Food Service Management				495,124.64
580 Travel				915.78
<b>Total Other Purchased Services</b>				<b>\$497,083.00</b>
600 <u>Supplies</u>				
610 General Supplies				4,573.24
630 Food				56,055.76
<b>Total Supplies</b>				<b>\$60,629.00</b>
700 <u>Property</u>				
740 Depreciation				20,749.00
<b>Total Property</b>				<b>\$20,749.00</b>
800 <u>Other Objects</u>				
810 Dues and Fees				265.00
<b>Total Other Objects</b>				<b>\$265.00</b>
<b>Total 3100 Food Services</b>				<b>\$1,034,134.00</b>

	<u>Food Service(51)</u>	<u>Child Care Operations(52)</u>	<u>Other Enterprise(58)</u>	<u>Internal Service(60)</u>	<u>Total</u>
<b>3000 <u>Operation of Non-Instructional Services</u></b>					
3100 Food Services	1,034,134.00				1,034,134.00
<b>Total Operation of Non-Instructional Services</b>	<b>\$1,034,134.00</b>				<b>\$1,034,134.00</b>
<b>TOTAL ACTUAL EXPENDITURES &amp; OTHER FINANCING USES</b>	<b>\$1,034,134.00</b>				<b>\$1,034,134.00</b>